



Fig. A.1: *Acrocassis roseomarginata*



Fig. A.2: *Aspidimorpha quinquefasciata*



Fig. A.3: *Aspidimorpha confinis*

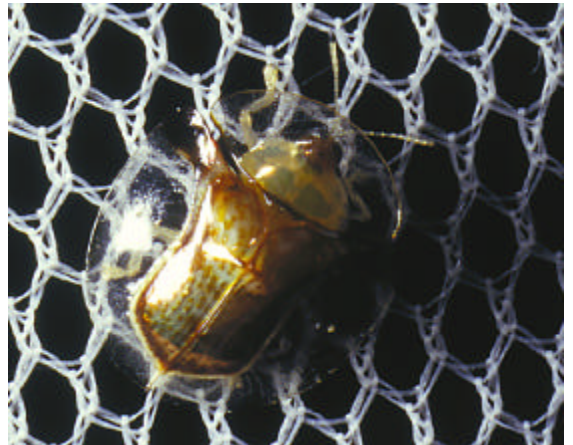


Fig. A.4: *Aspidimorpha submutata*



Fig. A.5: *Chiridopsis opposita*



Fig. A.6: *Aspidimorpha nigromaculata*



Fig. A.7: *Aspidimorpha indistincta*



Fig. A.8: *Merremia hederacea* at the river side

Fig. A.9: *Ipomoea heterotricha* in the savanna.





Fig. A.10: River side habitat (Lola) with the microhabitats „open sun“, „grass sun“ and „shrub sun“.



Fig. A.11: River side habitat (Vofa2) with the microhabitat „tree shade“. The flowering vine is *Merremia hederacea*.



Fig. A.12: Host plants under artificial shading and in the open sun in a field experiment (shading experiment and box experiment).



Fig. A.13: Flooding of the lower river bank at the site „Badeplatz“.

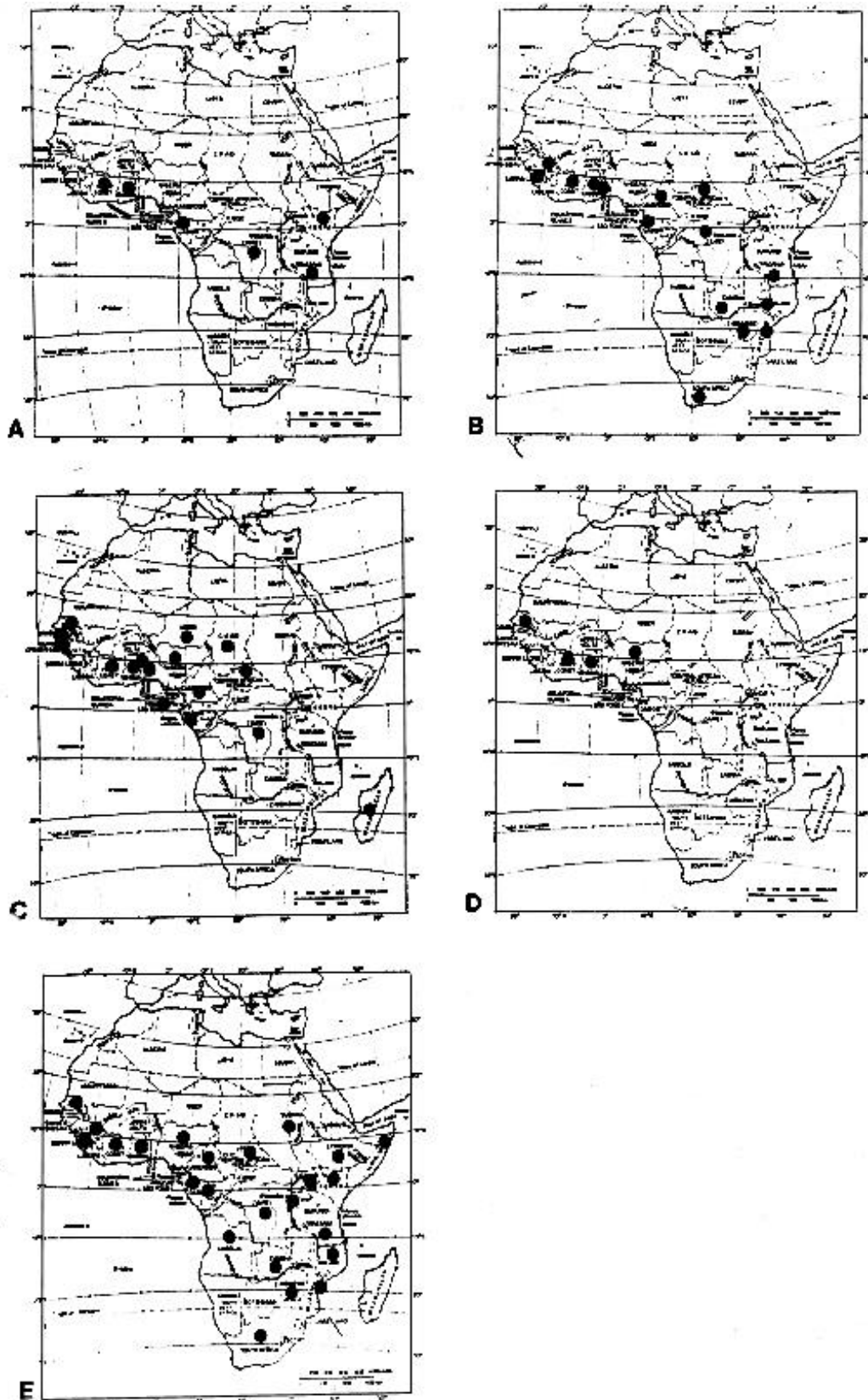


Fig. A.14: Geographical distribution of the Cassidinae-species in Africa. A: *Acrocassis roseomarginata*, B: *Aspidimorpha submutata*, C: *Aspidimorpha quinquefasciata*, D: *Chiridopsis opposita*, E: *Aspidimorpha confinis*. Data on sampling sites from Borowiec, pers. communication.

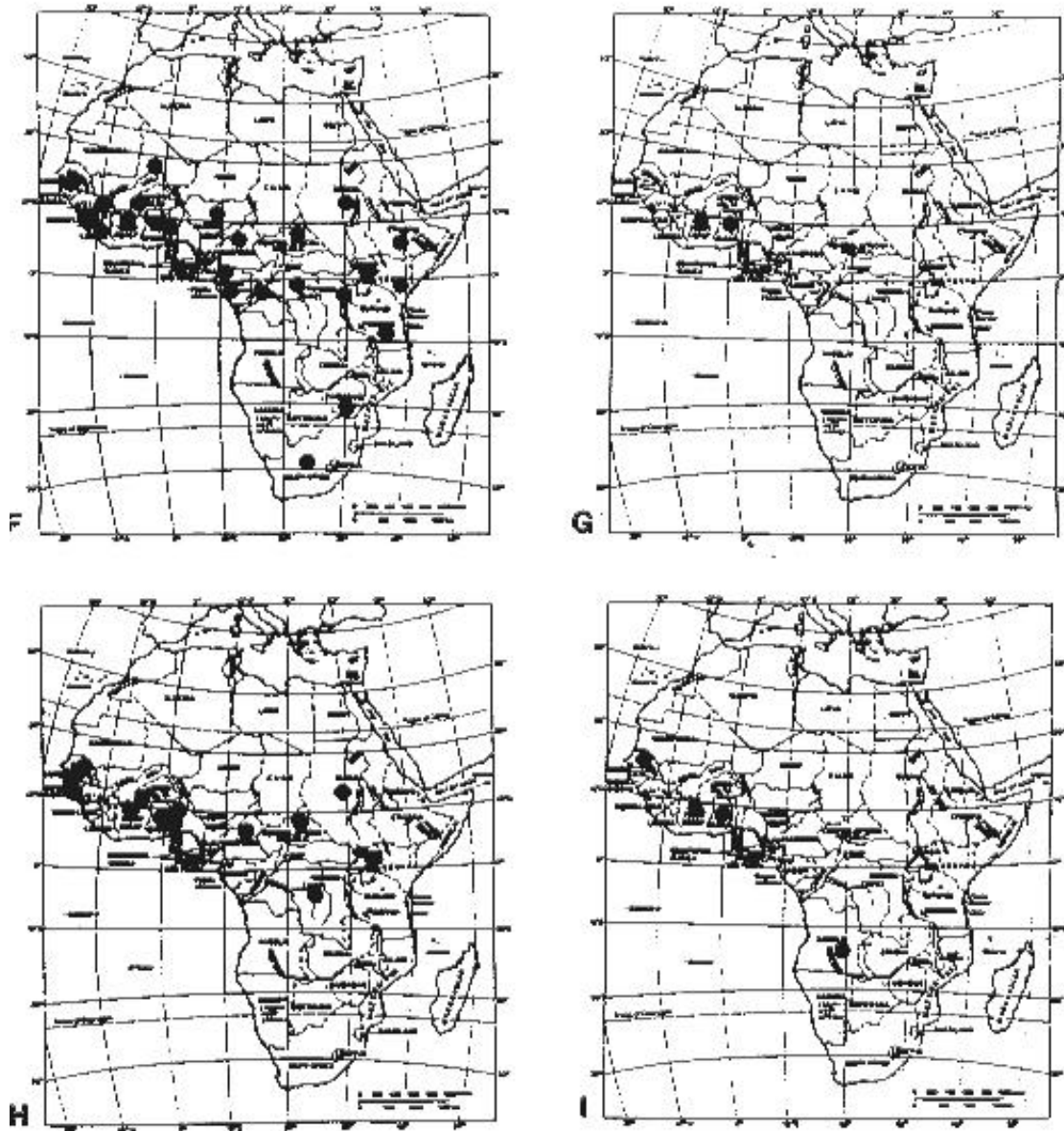


Fig. A.15: Geographical distribution of the Cassidinae-species in Africa. F: *Aspidimorpha nigromaculata*, G: *Aspidimorpha silverbergii*, H: *Aspidimorpha indistincta*, I: *Rhytodocassis scutellaris*. Data on sampling sites from Borowiec, pers. communication.