

## OPEN

# Novel Functional Renal PET Imaging With $^{18}\text{F}$ -FDS in Human Subjects

Rudolf A. Werner, MD,\*†‡ Alvaro A. Ordonez, MD,§|| Julian Sanchez-Bautista, MD,§|| Charles Marcus, MD,\* Constantin Lapa, MD,† Steven P. Rowe, MD, PhD,\* Martin G. Pomper, MD, PhD,\* Jeffrey P. Leal, BA,\* Martin A. Lodge, PhD,\* Mehrbod S. Javadi, MD,\* Sanjay K. Jain, MD,\*§|| and Takahiro Higuchi, MD, PhD†‡¶\*\*

**Abstract:** The novel PET probe 2-deoxy-2- $^{18}\text{F}$ -fluoro-D-sorbitol ( $^{18}\text{F}$ -FDS) has demonstrated favorable renal kinetics in animals. We aimed to elucidate its imaging properties in 2 human volunteers.  $^{18}\text{F}$ -FDS was produced by a simple 1-step reduction from  $^{18}\text{F}$ -FDG. On dynamic renal PET, the cortex was delineated and activity gradually transited in the parenchyma, followed by radiotracer excretion. No adverse effects were reported. Given the higher spatiotemporal resolution of PET relative to conventional scintigraphy,  $^{18}\text{F}$ -FDS PET offers a more thorough evaluation of human renal kinetics. Due to its simple production from  $^{18}\text{F}$ -FDG,  $^{18}\text{F}$ -FDS is virtually available at any PET facility with radiochemistry infrastructure.

**Key Words:** 2-deoxy-2- $^{18}\text{F}$ -fluoro-D-sorbitol,  $^{18}\text{F}$ -FDS, renal imaging, PET, split renal function, kidney

(*Clin Nucl Med* 2019;44: 410–411)

Received for publication November 27, 2018; revision accepted December 31, 2018. From the \*Division of Nuclear Medicine and Molecular Imaging, The Russell H. Morgan Department of Radiology and Radiological Science, Johns Hopkins University School of Medicine, Baltimore, MD; †Department of Nuclear Medicine, and ‡Comprehensive Heart Failure Center, University Hospital, University of Würzburg, Würzburg, Germany; §Center for Infection and Inflammation Imaging Research, and ||Department of Pediatrics, Johns Hopkins University School of Medicine, Baltimore, MD; ¶Department of Biomedical Imaging, National Cardiovascular and Cerebral Research Center, Suita; and \*\*Okayama University Graduate School of Medicine, Dentistry and Pharmaceutical Sciences, Okayama, Japan.

**Conflicts of interest and sources of funding:** This work was supported by the Competence Network of Heart Failure funded by the Integrated Research and Treatment Center of the Federal Ministry of Education and Research, NIH R01-HL131829, and German Research Council (DFG grant HI 1789/3-3). This project has received funding from the European Union's Horizon 2020 research and innovation programme under the Marie Skłodowska-Curie grant agreement no. 701983. None declared to all authors.

Correspondence to: Takahiro Higuchi, MD, PhD, Department of Nuclear Medicine, University Hospital Würzburg, Oberdürrbacherstr. 6, 97080 Würzburg, Germany. E-mail: thiguchi@me.com.

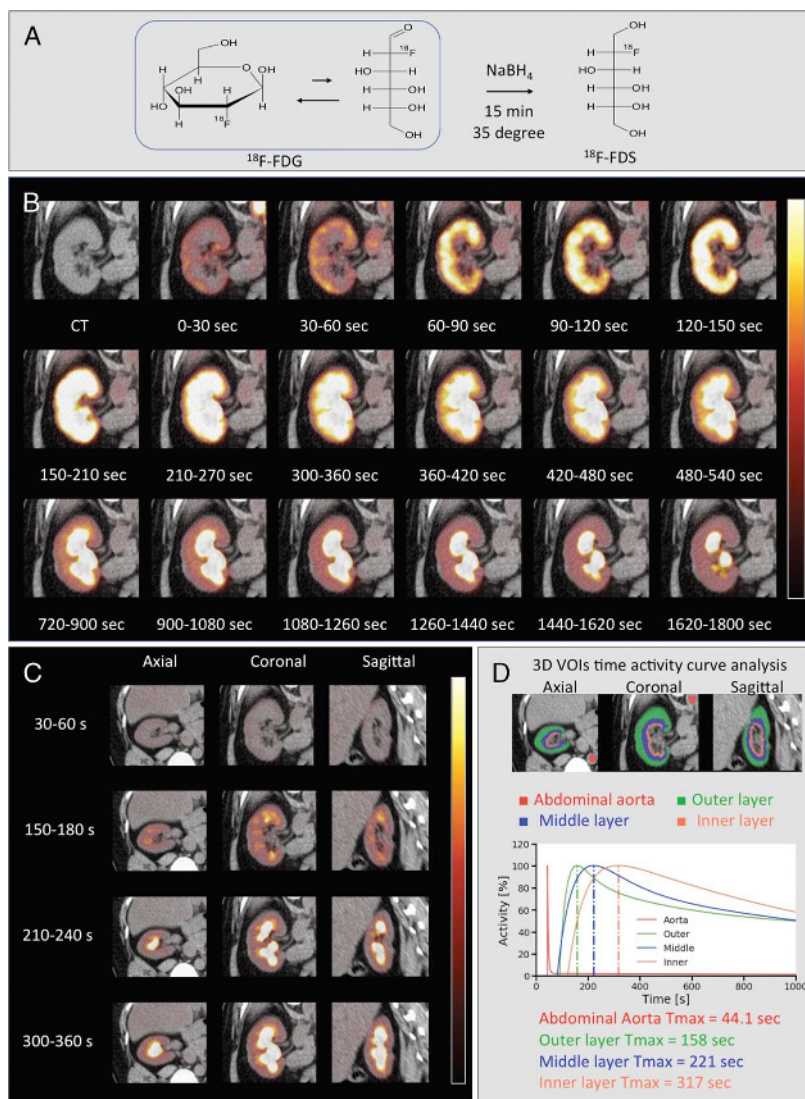
Copyright © 2019 The Author(s). Published by Wolters Kluwer Health, Inc. This is an open access article distributed under the Creative Commons Attribution License 4.0 (CCBY), which permits unrestricted use, distribution, and reproduction in any medium, provided the original work is properly cited.

ISSN: 0363-9762/19/4405-0410

DOI: 10.1097/RLU.0000000000002494

## REFERENCES

- Willie W, Smith HF, Smith HW. Renal excretion of hexitols (sorbitol, mannitol, and dulcitol) and their derivatives (sorbitan, isomannide, and sorbide) and of endogenous creatinine-like chromogen in dog and man. *J Biol Chem.* 1940; 135:231–250.
- Wakabayashi H, Werner RA, Hayakawa N, et al. Initial preclinical evaluation of  $^{18}\text{F}$ -fluorodeoxysorbitol PET as a novel functional renal imaging agent. *J Nucl Med.* 2016;57:1625–1628.
- Werner RA, Wakabayashi H, Chen X, et al. Functional renal imaging with 2-Deoxy-2-( $^{18}\text{F}$ -fluorosorbitol) pet in rat models of renal disorders. *J Nucl Med.* 2018;59:828–832.
- Weinstein EA, Ordonez AA, DeMarco VP, et al. Imaging enterobacteriaceae infection in vivo with  $^{18}\text{F}$ -fluorodeoxysorbitol positron emission tomography. *Sci Transl Med.* 2014;6:259ra146.
- Li ZB, Wu Z, Cao Q, et al. The synthesis of  $^{18}\text{F}$ -FDS and its potential application in molecular imaging. *Mol Imaging Biol.* 2008;10:92–98.
- Werner RA, Chen X, Rowe SP, et al. Moving into the next era of PET myocardial perfusion imaging: introduction of novel ( $^{18}\text{F}$ -labeled) tracers. *Int J Cardiovasc Imaging.* 2018.
- Ducharme J, Goertzen AL, Patterson J, et al. Practical aspects of  $^{18}\text{F}$ -FDG PET when receiving  $^{18}\text{F}$ -FDG from a distant supplier. *J Nucl Med Technol.* 2009;37:164–169.
- Blaufox MD. PET measurement of renal glomerular filtration rate: is there a role in nuclear medicine? *J Nucl Med.* 2016;57:1495–1496.
- Williams B, Tareen B, Resnick MI. Pathophysiology and treatment of ureteropelvic junction obstruction. *Curr Urol Rep.* 2007;8:111–117.



**FIGURE 1.** Due to its underlying sorbitol structure that shares kinetic properties to the criterion standard inulin (sorbitol-to-inulin clearance ratio, 1.01),<sup>1</sup> the novel renal PET imaging agent 2-deoxy-2- $^{18}\text{F}$ -fluoro-D-sorbitol ( $^{18}\text{F}$ -FDS) demonstrated promising properties for renal imaging in preclinical experiments.<sup>2,3</sup> Furthermore,  $^{18}\text{F}$ -FDS can be easily produced by a simple 1-step reduction of 2-deoxy-2- $^{18}\text{F}$ -fluoro-D-glucose ( $^{18}\text{F}$ -FDG).<sup>4,5</sup> We aimed to elucidate its imaging properties in human.  $^{18}\text{F}$ -FDS was produced by a simple 1-step reduction from  $^{18}\text{F}$ -FDG (A). Two volunteers underwent dynamic  $^{18}\text{F}$ -FDS PET/CT, and standard and blood urine tests were normal at the time of the scan (serum creatinine, <1.2 mg/dL; estimated GFR, >60 mL/min/1.73m<sup>2</sup>). Volumes of interest (outer layer covering the renal cortex and middle/inner layer covering the renal medulla) were placed on the left and right kidneys. B to D displays the right kidney of a 48-year-old woman. After rapid clearance of the circulation system, the radiotracer was excreted through the urinary system and finally transitioned into the collecting systems. In a dynamic PET acquisition centered on the kidneys, only the renal cortex was delineated 60 seconds after injection of the radiotracer, reflecting blood flow (B). Thereafter, activity gradually accumulated in the renal parenchyma and reached the pelvicalyceal system after 210 seconds (C), followed by radiotracer excretion. Finally, retention in the kidneys diminished completely. Three-dimensional volumes of interest placed on the outer (cortical) and middle/inner (medullary) layers of the kidneys confirmed  $^{18}\text{F}$ -FDS transit from the renal cortex through the medulla toward the pelvis (D). For the second volunteer, similar results on renal PET imaging were recorded. Given the higher spatiotemporal resolution of PET technologies relative to conventional 2D scintigraphy,  $^{18}\text{F}$ -FDS PET may offer a more thorough evaluation of human renal kinetics. Notably,  $^{18}\text{F}$ -FDS can be easily produced from the most commonly used PET radiotracer  $^{18}\text{F}$ -FDG, providing access for virtually any PET facility with radiochemistry infrastructure. Moreover, due to the long half-life (109.4 minutes), delivery from central cyclotron facilities to smaller hospitals can be envisaged,<sup>6</sup> which has been proven to be cost-effective for oncology imaging with  $^{18}\text{F}$ -FDG.<sup>7</sup>  $^{18}\text{F}$ -FDS PET has the major advantage of lower positron energy along with higher positron yield, and therefore, the increased count rates offer the opportunity to inject a considerably lower amount of activity. Hence,  $^{18}\text{F}$ -FDS PET could significantly lower radiation exposure to children without sacrificing imaging quality.<sup>8</sup> Thus,  $^{18}\text{F}$ -FDS could also be applied to pediatric indications, for example, to identify structural abnormalities with significant functional obstruction.<sup>9</sup>