

Neutrophil infiltration to the brain is platelet-dependent, and is reversed by blockade of platelet GPIIb/IIIa

James A. Giles,^{1,*} Andrew D. Greenhalgh,^{2,*} Adam Denes,³ Bernhard Nieswandt,⁴ Graham Coutts,¹ Barry W. McColl^{5,6} and Stuart M. Allan¹

¹Faculty of Biology, Medicine and Health, University of Manchester, Manchester, UK,

²Centre for Research in Neuroscience, Montreal General Hospital, McGill University Health Centre, Montreal, QC, Canada,

³"Momentum" Laboratory of Neuroimmunology, Institute of Experimental Medicine, Budapest, Hungary, ⁴Department of Vascular Medicine, University Hospital and Rudolf Virchow Centre for Experimental Biomedicine, University of Würzburg, Würzburg, Germany,

⁵The Roslin Institute & R(D)SVS, University of Edinburgh, Easter Bush, Midlothian, UK and ⁶Edinburgh Medical School, UK Dementia Research Institute at The University of Edinburgh, Edinburgh, UK

doi:10.1111/imm.12892

Received 20 July 2017; revised 4 December 2017; accepted 29 December 2017.

*These two authors contributed equally to this work.

Correspondence: Professor Stuart Allan, Division of Neuroscience and Experimental Psychology, School of Biological Sciences, Faculty of Biology, Medicine and Health, University of Manchester, AV Hill Building, Manchester M13 9PT, UK.

Email: stuart.allan@manchester.ac.uk

Senior Authors: Stuart M. Allan and Barry W. McColl

Email: Barry.McColl@roslin.ed.ac.uk

Introduction

The innate immune response provides rapid defence against infection, injury or disease. Neutrophils are the primary cellular response unit during the initial stages of these challenges and are essential for the destruction or removal of inciting stimuli.¹ However, prolonged or

excessive neutrophil-mediated inflammation is injurious to adjacent healthy tissue in many situations, and is especially harmful during central nervous system (CNS) inflammation where capacity for repair is limited.² An interaction with platelets is essential to trigger the tethering and rolling of neutrophils on inflamed venules, before their extravasation.³ Activated platelets attach to

Summary

Neutrophils are key components of the innate immune response, providing host defence against infection and being recruited to non-microbial injury sites. Platelets act as a trigger for neutrophil extravasation to inflammatory sites but mechanisms and tissue-specific aspects of these interactions are currently unclear. Here, we use bacterial endotoxin in mice to trigger an innate inflammatory response in different tissues and measure neutrophil invasion with or without platelet reduction. We show that platelets are essential for neutrophil infiltration to the brain, peritoneum and skin. Neutrophil numbers do not rise above basal levels in the peritoneum and skin and are decreased (~60%) in the brain when platelet numbers are reduced. In contrast neutrophil infiltration in the lung is unaffected by platelet reduction, up-regulation of CXCL-1 (2.4-fold) and CCL5 (1.4-fold) acting as a compensatory mechanism in platelet-reduced mice during lung inflammation. In brain inflammation targeting platelet receptor GPIIb/IIIa results in a significant decrease (44%) in platelet-mediated neutrophil invasion, while maintaining platelet numbers in the circulation. These results suggest that therapeutic blockade of platelet GPIIb/IIIa could limit the harmful effects of excessive inflammation while minimizing haemorrhagic complications of platelet reduction in the brain. The data also demonstrate the ability to target damaging brain inflammation in stroke and related disorders without compromising lung immunity and hence risk of pneumonia, a major complication post stroke. In summary, our data reveal an important role for platelets in neutrophil infiltration to various tissues, including the brain, and so implicate platelets as a key, targetable component of cerebrovascular inflammatory disease or injury.

Keywords: brain; inflammation; neuroinflammation.

Abbreviations: CBA, cytometric bead array; CNS, central nervous system; IL-1, interleukin-1; LPS, lipopolysaccharide; TNF, tumour necrosis factor; VCAM, vascular cellular adhesion molecule-1

neutrophils via the release and surface expression of platelet P-selectin from α -granules, which binds to P-selectin glycoprotein ligand-1 expressed on neutrophils.⁴ After CNS injury, a dense neutrophil invasion occurs,^{5–7} and selectively abrogating neutrophil infiltration is beneficial in animal models of stroke and experimental autoimmune encephalomyelitis.^{6,8} We have shown that mechanisms of neutrophil invasion following an innate immune challenge can be unique to their target tissue, allowing for tissue-specific anti-inflammatory interventions.⁹ This may be especially important when targeting components of the immune system that are particularly susceptible to infections, such as after stroke and spinal cord injury.^{10,11} Here we assessed the contribution of platelets to neutrophil-mediated inflammation across a variety of tissue beds, to investigate tissue-specific mechanisms of innate immunity, as we have previously shown in the context of interleukin-1 (IL-1).⁹ Furthermore, we investigated whether platelet-dependent neutrophil infiltration could be blocked, without reducing platelet numbers and increasing the risk of haemorrhage after cerebral inflammation.

Materials and methods

Animals

Experiments were performed on male 8- to 10 week-old wild-type C57BL/6 mice (Harlan Laboratories, Bicester, UK) under appropriate UK Home Office licences and adhered to the UK Animals (Scientific Procedures) Act 1986.

Inflammatory challenge

Peritoneal inflammation model. Mice were injected intraperitoneally with 1 mg/kg lipopolysaccharide (LPS) from *Escherichia coli* O127:B8 (Sigma-Aldrich, Dorset, UK) or vehicle (PBS) in a volume of 8 ml/kg. At 6 hr, peritoneal lavage was performed using 5 ml of lavage buffer (PBS containing 0.1% bovine serum albumin and 1 mM EDTA). Neutrophils in lavage fluid were quantified using Coulter Counter and haemocytometry measurements, combined with flow cytometry (see below).

Bronchoalveolar inflammation model. Mice were exposed to aerosolized LPS (2 mg/ml) or vehicle (saline) for 20 min via a nebulizer chamber. At 6 hr bronchoalveolar lavage was performed, via direct cannulation of the trachea, with 1 ml of lavage buffer.

Air-pouch inflammation model. Dorsal air-pouches were created in conscious mice as described previously.¹² At day 7, 1 ml of LPS (1 mg/ml) or vehicle (PBS) was

injected into the air-pouch. After 6 hr air-pouch lavage was performed using 4 ml lavage buffer.

Cerebral inflammation model. Animals were anaesthetized with isoflurane (3%) in O₂ (200 ml/min) and N₂O (400 ml/min) and placed securely in a small animal stereotaxic frame (Stoetling, Wood Dale, IL). After craniotomy, mice were injected intracerebrally with 1 μ l LPS (4 mg/ml), via a glass micro-needle (co-ordinates from bregma: anterior–posterior –0.0 mm, lateral –2.0 mm, ventral –2.5 mm; rate = 0.5 μ l/min). The micro-needle was left *in situ* for 2 min following the injection. Mice were transcardially perfused with saline at 6 hr and brain tissue was collected for cytometric bead array (CBA) analysis or perfuse-fixed (saline followed by paraformaldehyde 4%) at 24 hr for tissue sectioning.

Platelet reduction. Mice were injected intraperitoneally with anti-CD41 antibody (1 mg/kg) or IgG isotype control (1 mg/kg) 24 hr before inflammatory challenge. Tail vein blood samples taken at 0, 18 and 24 hr post injection were analysed using flow cytometry to quantify circulating platelets. To determine the effect of the antibody on circulating leucocyte populations, cardiac blood sampled before killing at 48 hr post injection underwent flow cytometric analysis (see below) to quantify the populations of various leucocytes. Platelet numbers were reduced by ~70% (Fig. 1a) with no significant effect on circulating leucocytes (data not shown). To block platelet–endothelium interactions without any reduction in platelets, an anti-GPIIb/IIIa Fab fragment (p0p/B) or isotype control IgG were injected intraperitoneally (4 mg/kg) 4 hr before intrastriatal injection of LPS. Anti-GPIIb/IIIa treatment had no effect on numbers of circulating neutrophils (data not shown).

Flow cytometry

Lavage fluid (200 μ l) or blood (50 μ l blood + 50 μ l buffer: 0.1% bovine serum albumin, 1 mM EDTA in PBS) samples were incubated for 20 min with 1 : 200 rat anti-mouse CD16/CD32 to block non-specific Fc binding. Cocktails of fluorophore-conjugated antibodies were added for 30 min, to detect Ly-6G, Ly-6C, CD45, B220, CD3, MHC-2, Gr-1, CD11b, CD115, CD41 and CD61. Red blood cells in samples were lysed by the addition of 450 μ l FACS Lysing Solution (BD Biosciences, Oxford, UK). Absolute numbers of cells were determined through the use of TruCOUNT™ tubes (BD Biosciences), or by the addition of 50 μ l fluorescent counting beads (Invitrogen, Paisley, UK). Flow cytometry was performed on a CyAn™ ADP Flow Cytometer (Dako UK Ltd, Ely, UK) equipped with 405-nm, 488-nm and 633-nm lasers using SUMMIT 4.0 software (Dako UK Ltd, Ely, UK). Cell populations were determined on SUMMIT 4.0 software via

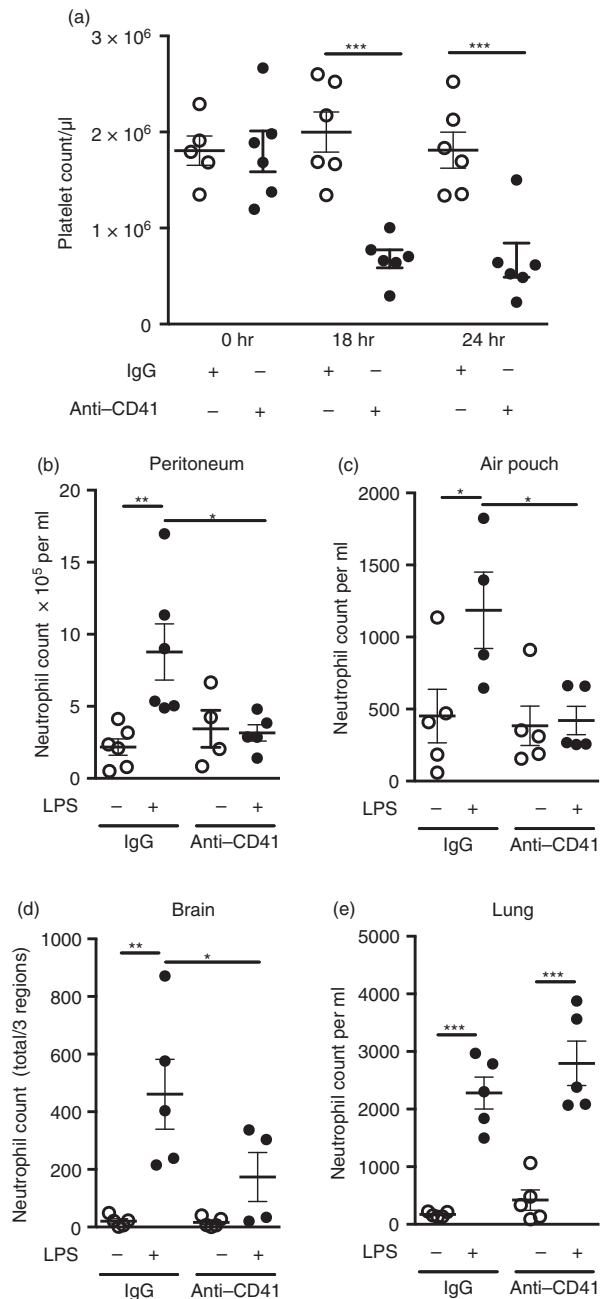


Figure 1. (a) Characterization of platelet reduction via anti-CD41 antibody. Anti-CD41 antibody or IgG control was administered intraperitoneally. Blood was sampled via tail vein sampling at 0, 18 and 24 hr post-injection. Quantification of platelets was carried out using flow cytometry using BD TruCOUNT™ tubes. Individual data points are presented as a scatter graph with the mean ± SEM shown. ****P* < 0.001; one-way analysis of variance with Bonferroni's correction. (b–e) Neutrophil infiltration to the peritoneum, skin and brain is platelet dependent after lipopolysaccharide (LPS)-induced inflammation. The innate immune response was triggered by LPS challenge in four different tissues 4 hr after mice had received either anti-CD41 antibody or control IgG (1 mg/kg), and neutrophil accumulation was measured. Neutrophil infiltration is dependent on platelets during inflammation in (b) the peritoneum, (c) subcutaneous air pouch and (d) brain. Conversely, (e) neutrophil infiltration to the lung is not affected by platelet reduction after LPS injection. **P* < 0.05, ***P* < 0.01, ****P* < 0.001; one-way analysis of variance with Bonferroni's correction. Individual data points are presented as a scatter graph with the mean ± SEM shown.

Daniel Anthony, University of Oxford, UK) was used to stain for neutrophils. Neutrophils were quantified in three regions (cortex, injection site and ventral striatum) using a 10 × 10 mm graticule at 20× magnification. Cerebrovascular activation was determined by the expression of vascular cellular adhesion molecule-1 (VCAM-1, goat anti-mouse primary antibody, 1 : 250; R&D Systems, Abingdon, UK).

Cytometric bead array

Cytokine concentrations in plasma and lavage samples were determined using mouse-specific CBA flex sets (BD Pharmingen, Oxford, UK). CBA was used to quantify IL-1α, IL-1β, IL-6, tumour necrosis factor-α (TNF-α), CXCL1 and CCL5 following the manufacturer's recommended protocol. Acquisition was undertaken using a BD FACSArray™ Bioanalyzer System (BD Biosciences), and results were determined using FCAP ARRAY™ software (Soft Flow, New Brighton, MN).

Statistics

Data are expressed as mean (± SEM). Differences between groups were analysed using one-way analysis of variance with Bonferroni's correction for multiple comparisons post hoc. Differences were considered statistically significant at *P* < 0.05.

Results

Platelets are essential for neutrophil invasion to the peritoneum, skin and brain, but not lung after LPS-induced inflammation

Until recently, the precise mechanism of platelet–neutrophil interaction *in vivo* during innate immune

positive labelling of relevant markers. For blood samples, a minimum of 1000 beads, 1000 neutrophils or 5000 leucocytes (whichever threshold occurred last) were acquired per sample. For lavage samples, a minimum of 20 000 cellular events were acquired per sample.

Immunostaining

Total cell numbers in brain tissue sections were determined using microscopy following immunohistochemistry staining. Anti-neutrophil (SJC4, rabbit anti-mouse) primary antibody (1 : 50 000; kindly provided by Professor

responses was unclear. However, Sreeramkumar and co-workers recently described platelet–neutrophil dynamics in inflamed cremaster blood vessels, showing that platelets are key to initiating the process of neutrophil tethering, rolling and crawling upon vessels.³ To determine if platelets are required to drive innate immune responses in other tissues we stimulated inflammation with the bacterial endotoxin LPS in mice with a reduction in platelets. We used the accumulation of neutrophils as a measure of the intensity of the inflammatory reaction and assessed this at time-points coinciding with peaks of neutrophil influx established previously for the respective tissues.⁹ LPS stimulated significant increases in neutrophil accumulation in lavage fluid from the peritoneum (4-fold), air-pouch (~3-fold), lung (~13-fold) and in the brain (~23-fold) (Fig. 1). In contrast, after platelet reduction, neutrophil recruitment was almost completely blocked in peritoneum (96%; Fig. 1b) and air-pouch (100%; Fig. 1c), and significantly reduced (66%) in the brain (Fig. 1d), showing platelet-dependent neutrophil infiltration for the first time in these tissues.

Redundancy of innate immune response mechanisms is an evolutionary advantage to tissues exposed to a wide variety of pathogens, such as the lung. Here, in contrast to peritoneum, air-pouch and brain, which are exposed to lower pathogenic load, we saw no effect of platelet reduction on neutrophil invasion after LPS-induced inflammation in the lung (Fig. 1e), showing platelet-independent mechanisms of neutrophil invasion.

Lipopolysaccharide injection in the peritoneum resulted in a significant increase (~2.5-fold) in the number of circulating neutrophils at 6 hr after injection, with anti-CD41 treatment having no effect on this increase (data not shown). In contrast, LPS, when administered in the air-pouch, lung and brain, did not affect circulating neutrophil numbers at 6 hr (data not shown).

Up-regulation of CXCL1 and CCL5 in the inflamed lung counterbalances the effects of platelet reduction

To further investigate tissue-specific mechanisms at each site of inflammation, the cytokines IL-1 α , IL-1 β , IL-6, TNF and chemokines CXCL1 and CCL5, which are important for neutrophil recruitment,¹³ were measured with or without platelet reduction. LPS induced a similar profile of inflammation across all tissue sites (Fig. 2). The inflammatory mediators measured were unaffected by

platelet reduction in the peritoneum, air-pouch and brain (Fig. 2). In contrast, with platelet reduction during lung inflammation, which failed to attenuate neutrophil recruitment, we found significant increases in the neutrophil chemoattractant CXCL1 (2.4-fold), and CCL5 (1.4-fold) in lung lavage fluid in animals with reduced platelets compared with IgG controls, and a non-significant increase in the pro-inflammatory cytokine TNF (Fig. 2).

Targeting of platelet GPIIb/IIIa reduces neutrophil infiltration to the brain

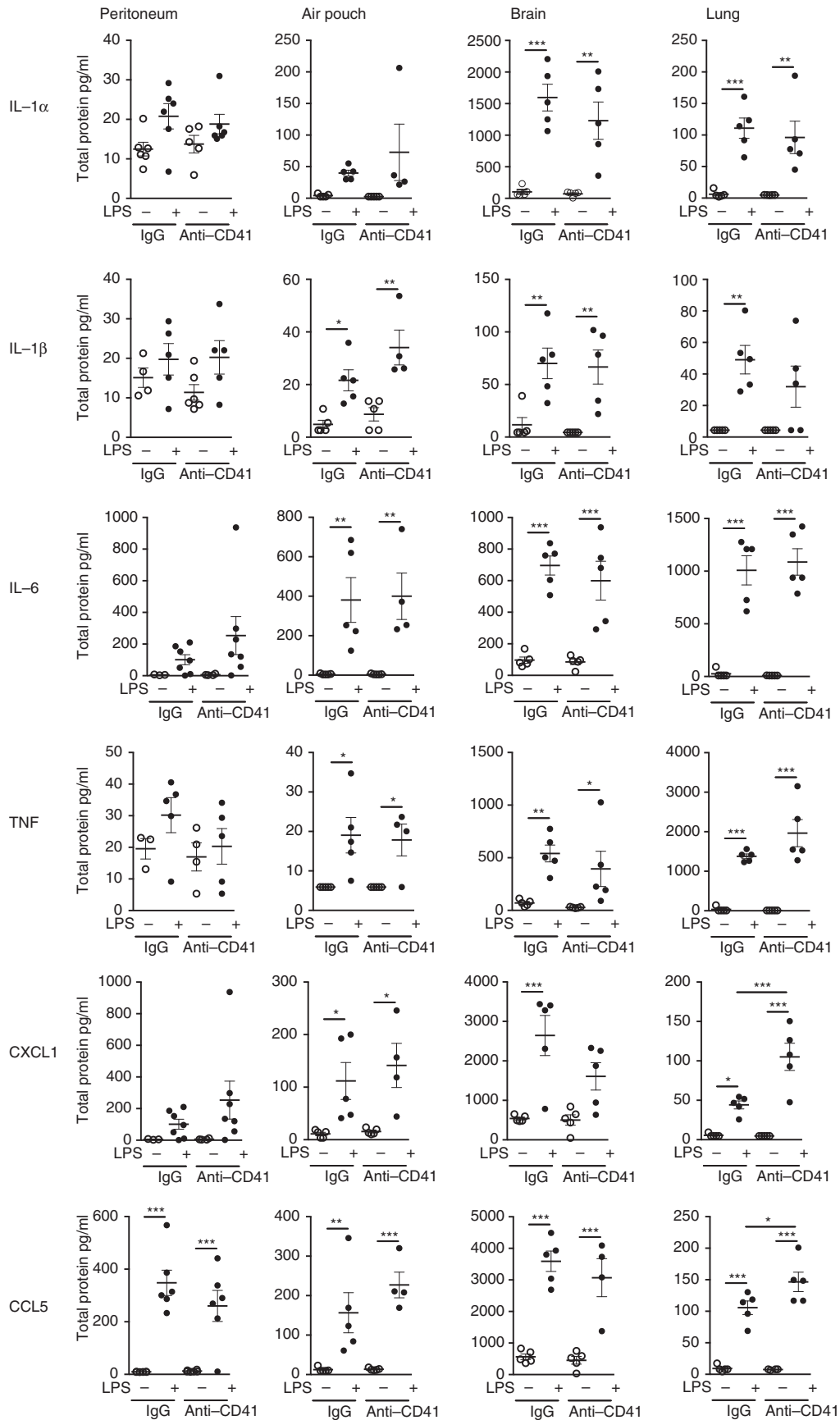
The innate immune system is essential for host defence but excessive or prolonged neutrophil-mediated inflammation is also associated with injury and disease, especially in the brain.² The above data provide evidence for platelet-dependent neutrophil infiltration in three different tissue beds. However, depleting platelets as an approach to reduce inflammation has important limitations due to increasing vulnerability to haemorrhage. Therefore, to assess whether platelet-dependent neutrophil infiltration could be blocked, in a manner with less potential systemic effects and therefore more relevant therapeutically and without reducing platelet numbers, we administered anti-GPIIb/IIIa antibody in the context of LPS-induced brain inflammation. Anti-GPIIb/IIIa antibody has been shown previously to protect mice from ischaemic brain injury in an experimental stroke model without an increase in bleeding complications.¹⁴ Here, anti-GPIIb/IIIa antibody had no effect on numbers of circulating platelets compared with IgG-injected controls (Fig. 3a) yet significantly reduced (44%) the number of neutrophils in brain tissue after LPS (Fig. 3b,c). We saw no effect of the anti-GPIIb/IIIa antibody on endothelial activation, as assessed by VCAM-1 staining (Fig. 3c).

Discussion

Neutrophil invasion to the brain is significantly reduced in mice lacking IL-1,⁹ as it is here in mice with reduced numbers of platelets. Furthermore, we have shown previously that platelet-derived IL-1 drives endothelial activation *in vitro*, suggesting a convergence of brain-derived and platelet-derived IL-1 effects on the endothelium.

These data replicate findings from Sreeramkumar *et al.*,³ where only LPS plus an anti MHC-I antibody pro-

Figure 2. Chemokines CXCL1 and CCL5 in the inflamed lung are up-regulated as compensatory mechanisms in response to platelet reduction. Concentrations of cytokines interleukin-1 α (IL-1 α), IL-1 β , IL-6, tumour necrosis factor (TNF) and chemokines CXCL1 and CCL5 were measured in lavage fluid of peritoneum, air pouch and lung, or homogenized brain tissue after lipopolysaccharide (LPS) challenge, in mice that had received either anti-CD41 antibody or control IgG. LPS induced a similar profile of inflammation across all tissue sites and was unaffected by platelet reduction in peritoneum, air pouch and brain. During inflammation, platelet reduction induced a significant increase in CXCL1 and CCL5 in lung lavage fluid. * $P < 0.05$, ** $P < 0.01$, *** $P < 0.001$; one-way analysis of variance with Bonferroni's correction. Individual data points are presented as a scatter graph with the mean \pm SEM shown.



Platelets are needed for neutrophil infiltration in innate immunity

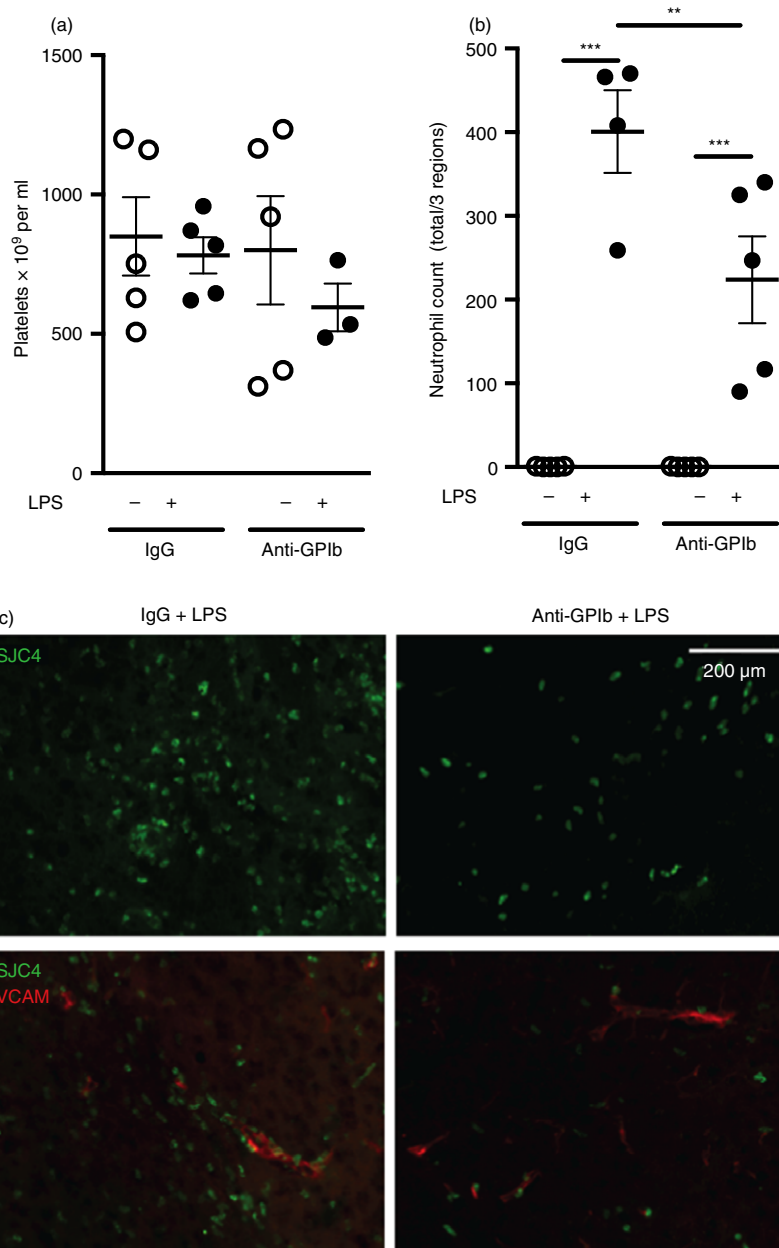


Figure 3. Non-depleting targeting of platelets reduces neutrophil infiltration to the brain. Anti-GPIIb antibody or IgG control was administered (4 mg/kg intraperitoneally) 4 hr before lipopolysaccharide (LPS)-induced brain inflammation. Anti-GPIIb antibody had no effect on numbers of circulating platelets compared with IgG-injected controls (a) yet significantly reduced the number of neutrophils in brain tissue compared with IgG control during inflammation (b). Representative immunofluorescence staining of reduced neutrophil numbers in the brain striatum following LPS injection in the presence of the anti-GPIIb antibody versus IgG control, which were not accompanied by any change in cerebrovascular activation (vascular cellular adhesion molecule-1 staining) (c). $^{***}P < 0.01$, $^{***}P < 0.001$; one-way analysis of variance with Bonferroni's correction. Individual data points are presented as a scatter graph with the mean \pm SEM shown. Scale bar = 200 μ m. [Colour figure can be viewed at wileyonlinelibrary.com]

duced a strong enough lung inflammation to be attenuated by platelet intervention, as LPS-induced inflammation alone was unaffected by blocking of platelet activity. Together, these findings provide further evidence for tissue-specific-mechanisms of innate immunity and highlight the flexibility of the lungs in dealing with pathogen-driven inflammation.

These data suggest the implementation of compensatory mechanisms specific to the lung in the absence of platelets, which would be advantageous to a site of such pathogenic exposure and explain the maintenance of neutrophil recruitment, despite platelet reduction.

Targeting neutrophil invasion during CNS injury may have therapeutic benefit as we, and others, have shown

neutrophil-mediated neurotoxic effects after stroke.^{6,15} Indeed, neutrophils have neurotoxic effects on neurons *in vitro*,¹⁶ an effect that appears dependent on phenotypic changes that occur during neutrophil cerebrovascular infiltration.¹⁷ Targeting various aspects of platelet activation reduces stroke injury.^{3,14,18} This, together with platelet-dependent neutrophil infiltration mechanisms³ and the relevance of these in different tissues shown here, suggests that platelet-targeted therapies may be beneficial after CNS injury.

A potential limitation of any immune-modulatory approach to treating acute CNS inflammatory conditions is the potential for increased risk of systemic infectious complications, notably in conditions such as stroke and

head trauma. Pneumonia is the most common cause of infection in these patients and as the innate immune response in the lung is platelet-independent, in contrast to the brain, this may offer a relatively targeted approach to inhibiting damaging CNS inflammation without overly compromising respiratory anti-microbial innate immunity. Platelets adhere to hypoxic endothelial cells by binding of their GPIIb/IIIa receptor to von Willebrand factor on the endothelial surface.¹⁹ Targeting this interaction may limit the time spent by platelets at the endothelium and reduce the number of physical interactions with neutrophils, while concomitantly reducing the ability of platelets to activate the endothelium, which is partly responsible for driving cerebrovascular inflammation.²⁰ Therefore, targeting of the platelet GPIIb/IIIa receptor is a potential therapeutic strategy for reducing neutrophil-mediated CNS injury.

In conclusion, we show here that platelets are essential for neutrophil extravasation to inflammatory sites, but that this is dependent on specific tissue location. We show that platelets are essential for neutrophil infiltration to the peritoneum, skin and brain, but not the lung, where compensatory mechanisms allow for greater flexibility when dealing with pathogen. We also specifically show that platelet-mediated neutrophil invasion to the brain is dependent upon the receptor GPIIb/IIIa, which can be targeted to limit excessive inflammation while retaining platelet numbers and reducing the risk of haemorrhage in the brain.

Author contributions

JG, AG, BM and SA conceived the study and designed experiments. JG, AG, AD, GC and BM performed experiments and analysed data. BN provided essential tools, reagents and expertise. BM and SA co-ordinated the study. AG, BM and SA wrote and edited the manuscript. All authors read and approved the final manuscript.

Acknowledgements

We thank Professor Daniel Anthony (University of Oxford, UK) for kindly providing the SJC4 antibody. This work was funded by the British Heart Foundation (grant reference: FS/10/73/28464) and Medical Research Council AD is supported by LP2016-4/2016. (grant reference: G0801296).

Disclosures

The authors declare no conflict of interest.

References

- 1 Rock KL, Latz E, Ontiveros F, Kono H. The sterile inflammatory response. *Annu Rev Immunol* 2010; **28**:321–42.
- 2 Donnelly DJ, Popovich PG. Inflammation and its role in neuroprotection, axonal regeneration and functional recovery after spinal cord injury. *Exp Neurol* 2008; **209**:378–88.
- 3 Sreeramkumar V, Adrover JM, Ballesteros I, Cuartero MI, Rossaint J, Bilbao I *et al.* Neutrophils scan for activated platelets to initiate inflammation. *Science* 2014; **346**:1234–8.
- 4 Page C, Pitchford S. Neutrophil and platelet complexes and their relevance to neutrophil recruitment and activation. *Int Immunopharmacol* 2013; **17**:1176–84.
- 5 Carlson SL, Parrish ME, Springer JE, Doty K, Dossett L. Acute inflammatory response in spinal cord following impact injury. *Exp Neurol* 1998; **151**:77–88.
- 6 McColl BW, Rothwell NJ, Allan SM. Systemic inflammatory stimulus potentiates the acute phase and CXC chemokine responses to experimental stroke and exacerbates brain damage via interleukin-1- and neutrophil-dependent mechanisms. *J Neurosci* 2007; **27**:4403–12.
- 7 Jin R, Yang G, Li G. Inflammatory mechanisms in ischemic stroke: role of inflammatory cells. *J Leukoc Biol* 2010; **87**:779–89.
- 8 Aubé B, Lévesque SA, Paré A, Chamma É, Kébir H, Gorina R *et al.* Neutrophils mediate blood–spinal cord barrier disruption in demyelinating neuroinflammatory diseases. *J Immunol* 2014; **193**:2438–54.
- 9 Giles JA, Greenhalgh AD, Davies CL, Denes A, Shaw T, Coutts G *et al.* Requirement for interleukin-1 to drive brain inflammation reveals tissue-specific mechanisms of innate immunity. *Eur J Immunol* 2015; **45**:525–30.
- 10 Chamorro A, Meisel A, Planas AM, Urra X, van de Beek D, Velkamp R. The immunology of acute stroke. *Nat Rev Neurol* 2012; **8**:401–10.
- 11 Schwab JM, Zhang Y, Kopp MA, Brommer B, Popovich PG. The paradox of chronic neuroinflammation, systemic immune suppression, autoimmunity after traumatic chronic spinal cord injury. *Exp Neurol* 2014; **258**:121–9.
- 12 Kukulski F, Ben Yebdri F, Lefebvre J, Warny M, Tessier PA, Sévigny J. Extracellular nucleotides mediate LPS-induced neutrophil migration *in vitro* and *in vivo*. *J Leukoc Biol* 2007; **81**:1269–75.
- 13 Kolaczowska E, Kubes P. Neutrophil recruitment and function in health and inflammation. *Nat Rev Immunol* 2013; **13**:159–75.
- 14 Kleinschnitz C, Pozgajova M, Pham M, Bendszus M, Nieswandt B, Stoll G. Targeting platelets in acute experimental stroke: impact of glycoprotein Ib, VI, and IIb/IIIa blockade on infarct size, functional outcome, and intracranial bleeding. *Circulation* 2007; **115**:2323–30.
- 15 Neumann J, Riek-Burchardt M, Herz J, Doeppner T, König R, Hütten H *et al.* Very-late-antigen-4 (VLA-4)-mediated brain invasion by neutrophils leads to interactions with microglia, increased ischemic injury and impaired behavior in experimental stroke. *Acta Neuropathol* 2015; **129**:259–77.
- 16 Dinkel K, Dhabhar FS, Sapolsky RM. Neurotoxic effects of polymorphonuclear granulocytes on hippocampal primary cultures. *Proc Natl Acad Sci USA* 2004; **101**:331–6.
- 17 Allen C, Thornton P, Denes A, McColl BW, Pierozynski A, Monestier M *et al.* Neutrophil cerebrovascular transmigration triggers rapid neurotoxicity through release of proteases associated with decondensed DNA. *J Immunol* 2012; **189**:381–92.
- 18 Dénes Á, Pradillo JM, Drake C, Sharp A, Warn P, Murray KN *et al.* *Streptococcus pneumoniae* worsens cerebral ischemia via interleukin 1 and platelet glycoprotein IIb/IIIa. *Ann Neurol* 2014; **75**:670–83.
- 19 Gardiner EE, Arthur JF, Shen Y, Karunakaran D, Moore LA, Am Esch JS *et al.* GPIIb/IIIa-selective activation of platelets induces platelet signaling events comparable to GPVI activation events. *Platelets* 2010; **21**:244–52.
- 20 Thornton P, McColl BW, Greenhalgh A, Denes A, Allan SM, Rothwell NJ. Platelet interleukin-1 α drives cerebrovascular inflammation. *Blood* 2010; **115**:3632–9.