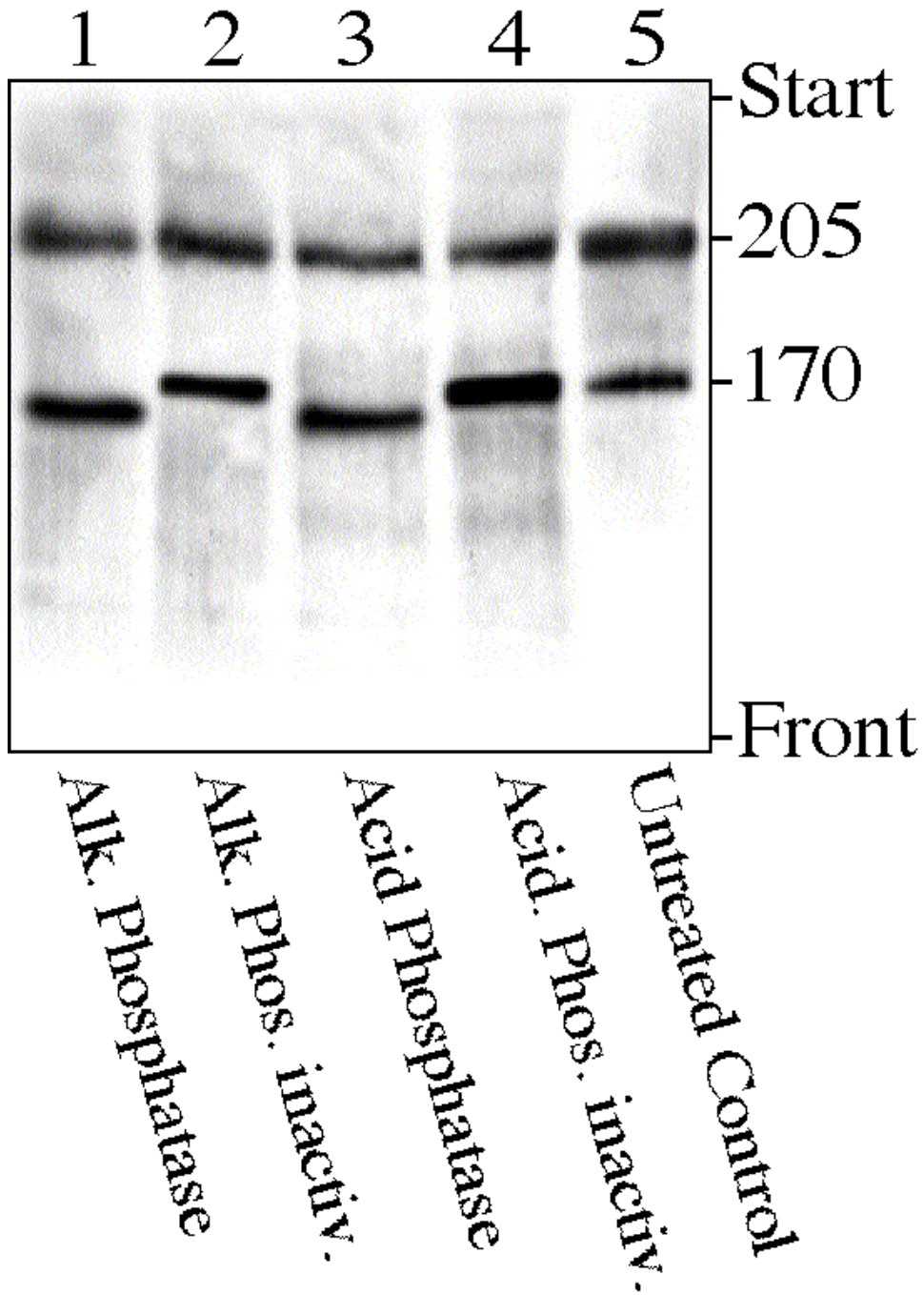


Figure 11 Phosphatase treatment



## Figure 11

Immunoblotting using topoisomerase II $\alpha$  antibody of the cytosolic fraction of human lymphocytes admixed with nuclear extract of A431 cells to obtain a defined mixture of centrosomal topoisomerase II $\alpha$ -like protein ( $M_r = 205$  kDa) and normal topoisomerase II $\alpha$  ( $M_r = 170$  kDa). The mixture was precipitated with 3 M ammonium sulfate, renatured with reaction buffer, and treated for 24 h at 37°C with alkaline phosphatase (lane 1) or acid phosphatase (lane 3). Controls were treated with heat-inactivated alkaline (lane 2) or acid phosphatase (lane 4) including a fraction of the mixture of cytosolic and nuclear extract, which was not treated. The  $M_r$ -values (kDa) on the right margin were obtained by comparing with marker proteins.