

# 5-HTT Deficiency Affects Neuroplasticity and Increases Stress Sensitivity Resulting in Altered Spatial Learning Performance in the Morris Water Maze but Not in the Barnes Maze

Margherita M. Karabeg<sup>1,2</sup>, Sandra Grauthoff<sup>3,4</sup>, Sina Y. Kollert<sup>1</sup>, Magdalena Weidner<sup>1</sup>, Rebecca S. Heiming<sup>3,4</sup>, Friederike Jansen<sup>3,4</sup>, Sandy Popp<sup>2</sup>, Sylvia Kaiser<sup>3,4</sup>, Klaus-Peter Lesch<sup>2</sup>, Norbert Sachser<sup>3,4</sup>, Angelika G. Schmitt<sup>1\*</sup>, Lars Lewejohann<sup>3,4,5</sup>

**1** Department of Psychiatry, Psychosomatics and Psychotherapy, University of Würzburg, Würzburg, Germany, **2** Division of Molecular Psychiatry, Department of Psychiatry, Psychosomatics and Psychotherapy, University of Würzburg, Würzburg, Germany, **3** Department of Behavioral Biology, University of Münster, Münster, Germany, **4** Otto Creutzfeldt Center for Cognitive and Behavioral Neuroscience, University of Münster, Münster, Germany, **5** Behavioural Biology, University of Osnabrück, Osnabrück, Germany

## Abstract

The purpose of this study was to evaluate whether spatial hippocampus-dependent learning is affected by the serotonergic system and stress. Therefore, 5-HTT knockout (-/-), heterozygous (+/-) and wildtype (+/+) mice were subjected to the Barnes maze (BM) and the Morris water maze (WM), the latter being discussed as more aversive. Additionally, immediate early gene (IEG) expression, hippocampal adult neurogenesis (aN), and blood plasma corticosterone were analyzed.

While the performance of 5-HTT<sup>-/-</sup> mice in the BM was undistinguishable from both other genotypes, they performed worse in the WM. However, in the course of the repeated WM trials 5-HTT<sup>-/-</sup> mice advanced to wildtype level. The experience of a single trial of either the WM or the BM resulted in increased plasma corticosterone levels in all genotypes. After several trials 5-HTT<sup>-/-</sup> mice exhibited higher corticosterone concentrations compared with both other genotypes in both tests. Corticosterone levels were highest in 5-HTT<sup>-/-</sup> mice tested in the WM indicating greater aversiveness of the WM and a greater stress sensitivity of 5-HTT deficient mice.

Quantitative immunohistochemistry in the hippocampus revealed increased cell counts positive for the IEG products cFos and Arc as well as for proliferation marker Ki67 and immature neuron marker NeuroD in 5-HTT<sup>-/-</sup> mice compared to 5-HTT<sup>+/+</sup> mice, irrespective of the test. Most differences were found in the suprapyramidal blade of the dentate gyrus of the septal hippocampus. Ki67-immunohistochemistry revealed a genotype x environment interaction with 5-HTT genotype differences in naïve controls and WM experience exclusively yielding more Ki67-positive cells in 5-HTT<sup>+/+</sup> mice. Moreover, in 5-HTT<sup>-/-</sup> mice we demonstrate that learning performance correlates with the extent of aN.

Overall, higher baseline IEG expression and increased aN in the hippocampus of 5-HTT<sup>-/-</sup> mice together with increased stress sensitivity may constitute the neurobiological correlate of raised alertness, possibly impeding optimal learning performance in the more stressful WM.

**Citation:** Karabeg MM, Grauthoff S, Kollert SY, Weidner M, Heiming RS, et al. (2013) 5-HTT Deficiency Affects Neuroplasticity and Increases Stress Sensitivity Resulting in Altered Spatial Learning Performance in the Morris Water Maze but Not in the Barnes Maze. PLoS ONE 8(10): e78238. doi: 10.1371/journal.pone.0078238

**Editor:** Judith Homberg, Radboud University, Netherlands

**Received:** May 27, 2013; **Accepted:** September 11, 2013; **Published:** October 22, 2013

**Copyright:** © 2013 Karabeg et al. This is an open-access article distributed under the terms of the Creative Commons Attribution License, which permits unrestricted use, distribution, and reproduction in any medium, provided the original author and source are credited.

**Funding:** This study was supplied by the German Research Foundation (DFG, <http://www.dfg.de/>), SFB TRR 58/Project A1 and A5 to NS, AS, KPL and the Interdisciplinary Center for Clinical Research of the University of Würzburg, (IZKF Würzburg, <http://www.izkf.uk-wuerzburg.de/>), Project N-162-N). The funders had no role in study design, data collection and analysis, decision to publish, or preparation of the manuscript.

**Competing interests:** The authors have declared that no competing interests exist.

\* E-mail: [Schmitt\\_A3@klinik.uni-wuerzburg.de](mailto:Schmitt_A3@klinik.uni-wuerzburg.de)

☯ These authors contributed equally to this work.

## Introduction

Serotonin (5-HT) is implicated in stress-induced neuropsychiatric disorders such as major depression and anxiety disorders [1-4]. The action of 5-HT as a messenger in the brain is regulated tightly by its synthesizing and metabolizing enzymes, and, more directly, by the Na<sup>+</sup>-dependent 5-HT transporter (5-HTT), which regulates the concentration of 5-HT in the extracellular space and therefore affects the receiving neurons as well as 5-HT turnover in the presynapse. It has been shown that 5HTT is a principal target of various antidepressants such as the selective reuptake inhibitors (SSRI) as well as for drugs of abuse including MDMA (“ecstasy”) and cocaine [5-8]. Molecular genetic studies in humans have revealed several *5-HTT* gene variations which comprise a repeat length-polymorphism in the transcriptional control region (*5-HTT* linked polymorphic region, *5-HTTLPR*), resulting in a short (S) and a long (L) allele. The S-allele entails lower 5-HTT mRNA/protein levels and is shown to be associated with personality traits of negative emotionality including anxiety, depression and aggressiveness [2-4,9-13].

To examine the impact of an altered serotonergic system on emotionality and behavior, a 5-HTT knock-out (5-HTT<sup>-/-</sup>) mouse line was generated [8,14]. In these 5-HTT<sup>-/-</sup> mice intracellular and extracellular 5-HT levels are changed from early stages of development onwards. In more detail, 5-HTT<sup>-/-</sup> mice show a 5 up to 13-fold increase of 5-HT concentrations in the extracellular space as evidenced by *in vivo* microdialysis in different brain regions including prefrontal cortex, striatum and substantia nigra [15-17]. In contrast, overall brain tissue levels of 5-HT are significantly decreased [8,14]. This lifelong reduced or absent 5-HTT function is associated with many changes at the neurochemical level such as the compensatory increased expression of the organic cationic transporter 3 in the hippocampus of 5-HTT<sup>-/-</sup> mice and various neuroplasticity phenomena such as higher spinogenesis in the amygdala of 5-HTT<sup>-/-</sup> compared to 5-HTT<sup>+/+</sup> mice [18-22], for review see 23,24. In addition to differential gene expression of undisturbed 5-HTT<sup>-/-</sup> mice both genotypes also react differently to acute stress: While 5-HTT<sup>+/+</sup> mice immediately after being exposed to forced swimming for one minute were found to express genes in the amygdala that are related to neuroplasticity and adaptation to stressors 5-HTT<sup>-/-</sup> express genes more related to chronic stress and pathophysiology [25,26]. Furthermore, 5-HTT deficient mice exhibit a changed behavioral phenotype, especially regarding increased anxiety- and depression-like behavior [5,15,24,27-29]. Moreover, a number of studies have already shown that anxiety-and/or depression-related behavior in 5-HTT deficient mice is exacerbated by stress exposure [5,30-34].

Several lines of evidence point to a role of 5-HT not only as moderator of emotionality and sociability, but also indicate 5-HT as a moderator of various aspects of cognitive functions including learning and memory. This notion suggests itself not only because of serotonergic pathways - 5-HTT and 5-HT receptors show regional distribution in brain areas implicated in learning and memory - but because the pharmacological stimulation or blockade of various types of 5-HT receptors

(e.g., 5-HT<sub>1A</sub>) as well as blockade of the 5-HTT modulate learning and memory [35-42]. Only a small number of human studies have already investigated the relationship between *5-HTTLPR* variants and cognitive performance. Among these, more recent work suggests that carriers of the S-allele perform better than individuals homozygous for the L-allele in measures of cognition (including learning) and decision-making [43-49]. In a study of ecstasy users and volunteers, subjects carrying the S-allele were found to perform better than L-carriers in risky decision making and a visual-planning task regardless of ecstasy use [43,50,51]. Finally, in a tryptophan depletion study, it was found that subjects homozygous for the S variant showed impaired verbal recall following depletion relative to subjects homozygous for the L-variant, but at baseline condition the S-group outperformed the L-group in tests of episodic memory and attention [48,52].

Apart from the human studies, research on 5-HTT<sup>-/-</sup> mice as well as on monkeys carrying the 5-HTTLPR S-allele have shown that these animals exhibit improved cognitive flexibility in various reversal learning paradigms using different visual or auditory cues [53-57]. In 5-HTT<sup>-/-</sup> rats however, cognitive flexibility measured in a visio-spatial discrimination and reversal learning paradigm was not found to be altered [57,58]. As discussed by Homberg & Lesch, superior reversal learning in 5-HTT<sup>-/-</sup> mice and 5-HTTLPR S-allele carriers may relate to increased attention towards biological relevant conditioned stimuli [1-4]. In the case of applying fear-related learning paradigms such as fear learning/extinction, 5-HTT<sup>-/-</sup> mice display increased recall of conditioned fear, but did not show heightened fear conditioning [5-8]. However, despite the tendency of overall increased cognitive flexibility associated with lowered 5-HTT, this does not necessarily lead to an increased behavioral flexibility: In a recent study subdominant 5-HTT<sup>-/-</sup> mice refused to emigrate from unfavorable social conditions which was interpreted as a lack of behavioral flexibility [2-4,9-13]. However, studies dealing with the possible influence of 5-HTT deficiency on spatial memory in mice are still missing.

Learning processes involving patterned synaptic stimulation are followed by rapid and transient expression of Immediate Early Genes (IEGs; [8,14]). IEGs are shown to play an important role in neuronal plasticity and are implicated as markers for neuronal activity, e.g., in response to stress [15-17]. IEGs may be categorized into two functional classes: (1) regulatory transcription factors which control the transcription of other “downstream” genes, and (2) effector IEGs, which directly influence cellular functions [8,14].

One of the regulatory transcription factors is cFos, which is part of the activating protein 1 (AP-1) transcription complex [18-22]. A brain region-specific increase of cFos expression is rapidly induced following various types of stimulations such as exercise [23,24], electroconvulsive seizures [25,26] the exposure to physical and psychological stressors [5,15,24,27-29], or spatial exploration and the consolidation of recognition memory [5,30-34], only to name a few. Moreover, cFos expression can be modulated by different drug classes such as anxiolytics and antidepressants as well as hormones (e.g., glucocorticoids) and neurotrophins [35-42]. One example

for an effector IEG is *activity-regulated cytoskeleton-associated protein* (Arc) also known as Arg3.1. The somatodendritic localization of Arc mRNA and protein is strongly regulated by synaptic activity [43-49] driven by the activation of NMDA receptors [43,50,51]. On the other hand, AMPA receptors negatively regulate Arc transcription, but not translation or protein stability [48,52]. The function of Arc synthesis lies in the maintenance of long-term potentiation (LTP), but also of long-term depression, and in the consolidation of long-term memory in behavioral tasks such as spatial learning and fear conditioning [53-57]. As Arc synthesis plays an important role for the induction and consolidation of LTP shown to be elicited by local brain derived neurotrophic factor (BDNF) infusions, Arc was identified as a key molecular effector of BDNF in synaptic plasticity [57,58]. Similar to cFos, Arc expression is influenced by different types of stress and is affected by antidepressant treatment [59-61].

One of the regions where IEG expression can be observed as an indicator of neuronal excitation is the hippocampus, which is known to be essential for learning and memory processes [62-64]. Moreover, it is a significant brain region involved in the neurocircuitry of stress [65]. Aside from the subventricular zone, the hippocampus is one of the two regions in the central nervous system where adult neurogenesis (aN) permanently takes place [66-69]. Stress has been found to be a negative regulator of aN [70-72], while 5-HT as well as the experience of learning and memory tasks have been found to promote aN [72-74]. Moreover, aN has been shown to play an important role in spatial learning in rodents [75]. Our own study investigating 5-HTT deficient mice showed that aN is influenced by the lack of the 5-HTT, even if aN differences between 5-HTT<sup>-/-</sup> and 5-HTT<sup>+/+</sup> littermates could exclusively be revealed in old, but not in young mice [21].

The two most common spatial learning tests for rodents, the Barnes maze (BM) and the Morris water maze (WM) address visio-spatial memory and have proven useful in detecting hippocampus-dependent cognitive deficits. The procedures differ with regard to the motivation to learn the spatial task and therefore presumably bear different challenges for the tested mice. In addition, these two tests are suspected to vary in the stress they induce in the tested animal [76]. Stress in turn, or to be more exact, stress-related adrenal steroid hormones are known to modulate cognitive processes, such as learning and memory [77-79]. Beyond that, the 5-HT system is suspected to play an important role in learning & memory [36,38,40,42,80]. Therefore, the aim of this study was to evaluate if spatial memory is affected by the 5HTT genotype in mice *per se* and if there is an interaction with the aversiveness of different testing conditions. Additionally, we asked the question whether aN markers and IEG expression are altered in the hippocampus in consequence of the 5HTT genotype and the behavioral tests.

## Animals, Material and Methods

### Animals and general housing conditions

Experimental animals were aged approximately 6 months. A total of 36 5-HTT knockout (-/-), 37 5-HTT heterozygous (+/-), and 37 5-HTT wild-type (+/+) male mice made up the behavior

cohort and were randomly assigned to three experimental groups: 1) the Barnes maze group (BM; n=42), 2) the Morris water maze group (WM; n=42) and 3) the naïve control group which was left undisturbed (CONT; n=26). All animals originated from the internal stock of 5-HTT deficient mice bred at the Department of Behavioural Biology at the University of Münster, Germany. The original breeding stock was obtained from the Department of Psychiatry, Psychosomatics and Psychotherapy at the University of Würzburg, Germany, where these mice had been back-crossed on a C57BL/6 background [8]. Genotyping was accomplished using tissue samples to extract genomic DNA amplified by PCR. Subsequently, 5-HTT genotypes were identified by gel electrophoresis of DNA-fragments of either 225 bp (5-HTT<sup>+/+</sup>), 272 bp (5-HTT<sup>-/-</sup>) or both (5-HTT<sup>+/-</sup>).

Pups were weaned on day 21 and separated by gender. Experimental animals were maintained in mixed 5-HTT genotype sibling groups of 2 to 5 animals in Macrolon cages type III (42 x 27 x 16 cm). Sawdust as bedding material (Allspan, Höveler GmbH & Co. KG, Langenfeld, Germany), a paper towel as nesting material, and food (1324, Altromin GmbH, Lage, Germany) and water were provided *ad libitum*. One week prior to testing, animals were housed singly in cages of the same size. The housing room was maintained at a 12 h light/dark cycle (lights on at 0800 h) and a temperature of 22 ± 3°C.

In addition, 150 mice (45 5-HTT<sup>-/-</sup>, 55 5-HTT<sup>+/-</sup>, 50 5-HTT<sup>+/+</sup>; = hormone cohorts, to be specified in 2.3) were used for stress hormone measurements of corticosterone from trunk blood. For animal welfare considerations these mice were not intentionally bred for this experiment but accumulated over the course of 2 years as surplus animals from the breeding colony.

### Ethics Statement

The present work complies with current regulations covering animal experimentation in Germany and the EU (European Communities Council Directive 86/609/EEC). All experiments were approved by the local authority and supported by the 'Animal Welfare Officer' of the University of Münster (reference numbers: 8.87-51.05.20.10.052 and 8.84-02.05.20.11.231).

### Experimental design of the spatial learning study

All behavioral tests were carried out at the Department of Behavioural Biology at the University of Münster, Germany. The experimenter was blind to the 5-HTT genotype of the mice tested in order to avoid any bias.

**Barnes maze test.** This test takes advantage of the natural preference of rodents to avoid brightly lit open surfaces. Therefore no additional aversive stimuli are needed [81]. The apparatus consisted of a brightly lit (~200 lx) circular platform (100 cm in diameter) that was elevated 120 cm above the floor. Twelve holes were arranged in a clock-face manner close to the edge of the platform. All but one of the holes were closed by a short (4 cm) wire mesh tube. The residual hole was connected to the home cage of the tested animal via a wire mesh tunnel of 3 cm diameter. The home cage was placed directly beneath the center of the platform to ensure that the mouse was not able to see or smell the correct hole when

being placed on the platform. The objective for the mouse was to learn a spatial relationship between the escape hole and visual cues placed around the apparatus in the experimental room. The mice performed two trials per day with a 15-min inter trial interval on five consecutive days. The position of the escape hole remained constant for each mouse during the first four days of testing. At day five, the escape tunnel was switched to a different, randomly chosen hole in order to measure the ability of the mice to generalize the task by re-learning a new position (reversal trials). Each trial started by placing the mouse in a dark cylinder (11 cm diameter; 20 cm high) in the center of the platform. After approximately 30 s the cylinder was lifted and the trial started. If the mouse did not enter the escape hole within 300 s, the experimenter gently guided it there. After each trial the platform was cleaned with 70% ethanol. The latency to find the escape hole, total number of errors, number of stops (zero velocity for 1s) and the path length were recorded by an automated tracking system [82]. An error was defined as reaching a hole that did not lead to the escape tunnel.

**Morris water maze.** A non-cued version of the WM [83] was used to assess the ability to find a hidden platform in a water tank. The maze comprised a circular pool (100 cm in diameter) filled with water ( $23 \pm 1^\circ\text{C}$ ) to a height of 32 cm. For spatial orientation different geometric shapes were presented in the surroundings of the pool. The objective for the mouse was to find the platform, which was 10 cm in diameter and made of translucent acrylic glass. The platform was hidden 1 cm below the water surface in the middle of one quadrant of the pool, 20 cm away from the wall. Mice were given three trials per day with a 15 min inter-trial interval on five consecutive days. On the last day, the platform was placed in a different quadrant in order to measure the ability of the mice to generalize the task by re-learning a new position (reversal trials). Each trial started by gently placing the mouse into the water with its head towards the pool wall in any of the three quadrants without the platform. If an animal found the platform within 60 s, it was left to stay on the platform for 10 s. In the case an animal did not find the platform they were gently guided to the platform by the experimenter. Between the trials, all mice were placed back in their home cages using a spoon-net in order to avoid direct contact with the experimenter. All trials were tracked automatically by a digital tracking system (see above) assessing path length, swimming speed, floating behavior (estimated as the number of stops) and latency to escape from the water.

### Glucocorticoid analysis

In order to further evaluate the effects of the two different learning tests on stress physiology, trunk blood of mice from two separate cohorts (both included all three genotypes) was taken. The first cohort was subjected to a single trial and the second one to three (BM) or four (WM) trials, the last of which was taking place on the second day. The learning tests were conducted as described above except for the reduced number of trials. 15 min after the start of the final trial the mice were anaesthetized with isoflurane and decapitated. In the first

hormone cohort, naïve mice were used as an additional group to determine baseline corticosterone values.

As already mentioned these mice were accumulated over time. Thus the glucocorticoid analyses of the two hormone cohorts was carried out at two different time points. Samples from all groups were taken at the same time of day. Trunk blood was collected using heparinized capillaries, centrifuged for 5 min at  $14800 \times g$  and plasma was stored at  $-20^\circ\text{C}$  for later evaluation.

Plasma corticosterone concentrations were determined by enzyme linked immunosorbent assay (EIA, DE4164, Demeditec Diagnostics GmbH, Kiel, Germany) according to the manufacturer's recommendations. All standards, samples, and controls were run in duplicate concurrently. The intra- and inter-assay coefficients of variation were 3.3% and 6.0%, respectively.

### Quantitative immunohistochemistry

**Brain Tissue.** Sixty hours after the last learning trial all mice of the behavior cohort (BM, WM, CONT) were deeply anaesthetized with isoflurane and sacrificed. Brains were dissected and fixed by immersion in 4% paraformaldehyde (PFA, dissolved in PBS, pH 7.5) for 72 h. Fixed brains were transported to the Department of Psychiatry, Psychosomatics and Psychotherapy at the University of Würzburg and transferred to 10 and 20% sucrose in PBS. Subsequently, brains were frozen in precooled isopentane and stored at  $-80^\circ\text{C}$ . To simplify matters, we excluded brains of 5-HTT $+/+$  mice from our quantitative immunohistochemistry study and focused on 5-HTT $+/+$  and 5-HTT $-/-$  mice, which were shown to perform differently in the WM task. Thus, there were mouse brains of six experimental groups: 5-HTT $+/+$ , CONT (n=7); 5-HTT $+/+$ , BM (n=10); 5-HTT $+/+$ , WM (n=10); 5-HTT $-/-$ , CONT (n=7); 5-HTT $-/-$ , BM (n=10); 5-HTT $-/-$ , WM (n=9).

Serial coronal sections were cut at 50  $\mu\text{m}$  on a freezing microtome. These free-floating sections were collected in a one-in-eight series, placed in 24-well plates each well filled with 1xTBS.

**Immunohistochemistry.** In order to process brain slices for immunohistochemistry, sections were washed three times for 5 min with 1xTBS and subsequently incubated with 0.6% hydrogen peroxide in TBS for 30 min to inhibit endogenous peroxidase. After another washing step with 1x TBS, sections were transferred to 1.5 ml tubes filled with 0.01 M citrate buffer with a pH of 8.5 and placed into a water bath, heated to  $80^\circ\text{C}$  for 35 min for antigen retrieval. After cooling down close to room temperature, the slices were retransferred to 24-well plates. After washing with 1x TBS the sections were incubated for one hour in a blocking solution containing normal horse or normal goat serum respectively (5% normal serum; 0.25% Triton X-100; 2% bovine serum albumin (BSA) in 1xTBS, pH 7.5). Thereafter, sections were incubated in blocking buffer containing either the polyclonal anti-Ki67 antibody produced in rabbit (1:3000; VP-K451; Vector Laboratories; Burlingame, CA 94010 U.S.A.) the NeuroD [1:2000; made in goat; (N-19); sc-1084], Arc [1:2000; made in rabbit; (H-300); sc-15325] or cFos antibodies [1:8000; made in rabbit (4);; sc-52] (all three of them were obtained from Santa Cruz Biotechnology, Santa

Cruz, CA, USA) for 48 h at 4 °C. Afterwards, sections were washed again three times for 5 min in 1x TBS and incubated for 1.5 h in biotinylated goat anti-rabbit or horse anti-goat secondary antibodies, respectively [Vector Laboratories; diluted 1:1000, in a solution containing 2% normal horse or normal goat serum; 0.25% Triton X-100, 2% BSA, in TBS, pH 7.5]. Sections were then washed and processed with avidin-biotinylated horseradish peroxidase complex in 1x TBS (Elite Kit; Vector Laboratories) for 1 h at room temperature. After another washing step the binding sites of the antibodies were visualized using 3,3'-Diaminobenzidine (DAB Substrate Kit, Roche Diagnostics, Mannheim, Germany). Transferring the slices into 1xTBS stopped the reaction. Subsequently, sections were mounted on slides, were left to dry at least overnight and were coverslipped with VitroClud (R. Langenbrinck; Emmendingen, Germany).

**Quantification of immunolabeled cells.** An Olympus BX51 microscope (Olympus, Hamburg, Germany) coupled to the Neurolucida imaging system (Microbrightfield, Inc., Williston, VT, USA) was used to acquire representative images from the examined individuals and to quantify cFos and Arc immunoreactive (ir) cells found in the GCL as well as Ki67 and NeuroD immunostained cells detected in the SGZ. The volume of the GCL in each brain was also assessed via the Neurolucida system. For this purpose the GCL in each brain was surrounded by a closed line. The area inside this line was measured automatically by the system. With the thus resulting area from each brain slice, the slice thickness and the number of series, we were able to extrapolate the GCL volume for each brain.

Labeled cells were counted in both hippocampi in every eighth 50 µm thick section, recording the suprapyramidal and infrapyramidal layer of the SGZ/GCL separately. This resulted in an analysis of an average of 8 sections per mouse brain. Experimenters blind to the treatment and *5-HTT* genotype did all the assessments. Immunopositive cells were counted at 20 x 1600 magnifications using the serial section manager function of the Neurolucida software.

For quantitative evaluation a fictive coronal separation plane along the septotemporal axis of the hippocampus was used to divide the data obtained from septal and temporal sections. The first section that showed the corpus callosum disconnected inside the two hemispheres was declared as the first section of the temporal part of the hippocampus. All sections before that point were considered to hold the septal part of the hippocampus (between interaural 1.26 and 1.34 mm; [84]).

Some sections were lost in the process of cutting or during free-floating immunohisto-chemistry, which resulted in an irregular number of sections. Therefore, those brains that had less than three sections within the septal or temporal part of the hippocampus were excluded from the evaluation of the septal and temporal hippocampus, respectively. After this adjustment, the mean number of immunopositive cells in the suprapyramidal and/or infrapyramidal layer of the SGZ/GCL was calculated per septal or temporal hippocampus per section for each brain.

## Statistical analysis

Behavioral data from the spatial learning tests [the acquisition phase of the BM (trial 1-8) and the WM (trial 1-12) as well as the reversal trials (BM: 9-10; WM: 13-15)] were analyzed using repeated measures (RM-)ANOVA with trial as the repeated measure and *5-HTT* genotype as the between subject factor. For further comparison of *5-HTT* genotypes the areas under the learning curves (AuCs) of the acquisition phase of the tests (BM: trial 1-8; WM: trial 1-12) were calculated for each individual. The calculated AuCs were subjected to one-way ANOVAs with *5-HTT* genotype as the between subject factor. Post hoc analyses were performed using Bonferroni corrected t-tests. Spearman's rank correlation coefficient was used to assess the correlation between learning performance, represented by the AuCs and numbers of immunoreactive cells in the DG. Corticosterone concentrations were analyzed using a two-way ANOVA with *5-HTT* genotype and treatment (CONT, BM, WM) as the between subject factors. As the corticosterone levels of the two hormone cohorts had been measured in two separate assays, they had to be statistically analyzed separately. Graphics presented and statistics carried out for behavioral and hormonal measures were done using the statistical software Graph Pad Prism.

Quantitative immunohistochemistry data were analyzed using two-way ANOVA with genotype and treatment (CONT, BM, WM) as the between subject factors. Post hoc analyses were performed using Bonferroni corrected t-tests. For immunohistochemical measures, statistical evaluation was performed with SPSS (IBM Deutschland GmbH, Ehningen).

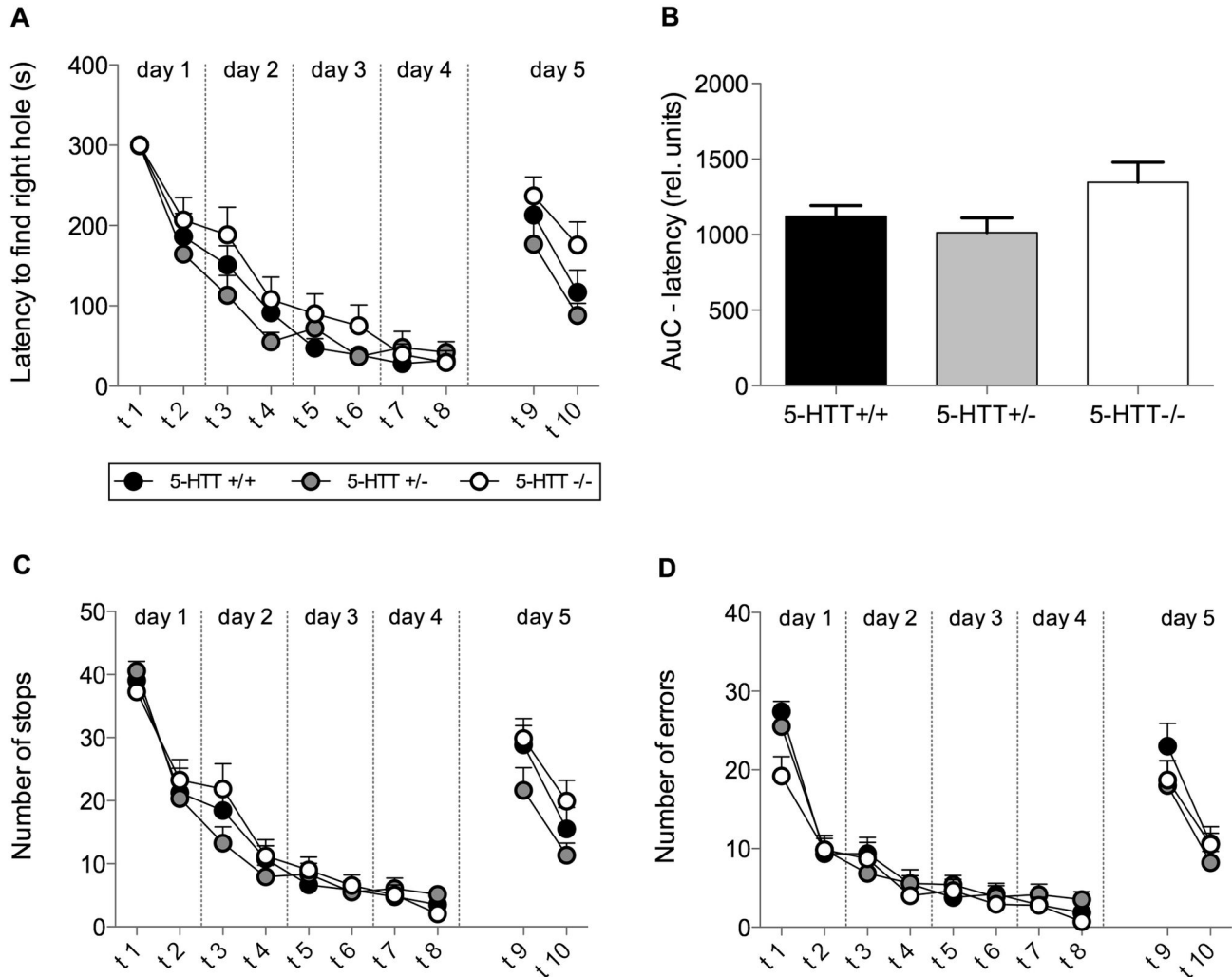
For all presented data, significance was defined as  $p \leq 0.05$ .  $P$ -values of  $\leq 0.01$  were considered to be highly significant and  $0.05 < p < 0.1$  was defined as a trend.

## Results

### **5-HTT<sup>-/-</sup> mice performed significantly worse compared with 5-HTT<sup>+/-</sup> and <sup>+/+</sup> mice in the WM, but not in the BM**

During the acquisition phase of the BM, an overall reduction in the latency to find the correct hole was found, indicated by a highly significant trial effect (RM-ANOVA:  $F[1,325]=86.71$ ,  $p < 0.0001$ ; Figure 1A). RM-ANOVA revealed no significant effect of genotype ( $F[1,325]=1.59$ ,  $p=0.21$ ; Figure 1A). Overall learning performance was measured by calculating the area under the learning curve (AuC) for the escape latency (Figure 1B). An ANOVA revealed a trend towards a *5-HTT* genotype effect ( $F[2,39]=2.639$ ,  $p=0.09$ ). Post hoc analysis revealed no significant differences (5-HTT<sup>+/+</sup> vs. 5-HTT<sup>+/-</sup>: t-test,  $t=0.7157$ ,  $p > 0.05$ ; 5-HTT<sup>-/-</sup> vs. 5-HTT<sup>+/-</sup>: t-test,  $t=1.533$ ,  $p > 0.05$ ; 5-HTT<sup>-/-</sup> vs. 5-HTT<sup>+/+</sup> mice: t-test,  $t=2.249$ ,  $p > 0.05$ ).

Additionally, significant trial effects indicate highly significant reductions in the number of stops (RM-ANOVA,  $F[1,325]=93.31$ ;  $p < 0.0001$ ; Figure 1C), the number of errors made in the BM ( $F[1,325]=72.22$ ;  $p < 0.0001$ ; Figure 1D) as well as the distance covered in the BM ( $F[1,325]=100.1$ ;  $p < 0.0001$ ; data not shown). The RM-ANOVA revealed no significant *5-HTT* genotype effect regarding the number of stops ( $F[1,325]=0.43$ ;  $p=0.65$ ; Figure 1C), the number of errors



**Figure 1. Learning performance in the Barnes maze task.** Mice of all three genotypes (5-HTT+/+, 5-HTT+/-, 5-HTT-/-) were tested twice per day on 4 consecutive days (acquisition phase; trials 1 - 8). Trials on day five represent reversal trials (trials 9 - 10). (A) Learning curve for the latency to enter the right hole. RM-ANOVA revealed a significant effect of trial (indicating learning performance) but no genotype effect. (B) The area under the learning curve (AuC) was calculated for each individual for statistical comparison of learning in the acquisition phase. ANOVA revealed no significant effects of genotype. (C) Curve depicting the number of stops during each trial. (D) Learning curve of the number of errors. For stops (C) and errors (D) RM-ANOVA revealed a significant effect of trial indicating learning performance but no genotype effect. Data in all figures represent means + SEM.

doi: 10.1371/journal.pone.0078238.g001

( $F[1,325]=2.46$ ;  $p=0.1$ ; Figure 1D) nor regarding the distance covered ( $F[1,325]=1.97$ ;  $p=0.15$ ; data not shown).

As to the reversal trials, a highly significant trial effect (RM-ANOVA:  $F[1,39]=30.87$ ;  $p<0.0001$ ; Figure 1A) as well as a trend towards a significant difference in the latency to find the correct hole between the three 5-HTT genotypes was found (RM-ANOVA:  $F[2,39]=2.93$ ;  $p=0.065$ ; Figure 1A). For further investigation of the genotype effect, Bonferroni corrected post hoc t-tests were performed. These however revealed no significant differences (5-HTT+/+ vs. 5-HTT+/-:  $t=1.06$ ,  $p>0.1$ ; 5-HTT-/- vs. 5-HTT+/-:  $t=1.35$ ,  $p>0.1$ ; 5-HTT-/- vs. 5-HTT+/+ mice:  $t=2.41$ ,  $p>0.1$ ).

Overall reversal trial performance was measured by calculating AuC for the escape latency. One-way ANOVA over the AuC performed for the reversal trials confirmed this trend ( $F[2,39]=2.93$ ;  $p=0.065$ ; data not shown). Bonferroni corrected post hoc analysis however revealed no significant differences (t-test; 5-HTT+/+ vs. 5-HTT+/-: t-test,  $t=1.06$ ,  $p>0.1$ ; 5-HTT-/- vs. 5-HTT+/-: t-test,  $t=1.35$ ,  $p>0.1$ ; 5-HTT-/- vs. 5-HTT+/+ mice: t-test,  $t=2.41$ ,  $p>0.1$ ).

In the acquisition phase of the WM, a reduction in the latency to find the hidden platform was detected, as indicated by a highly significant trial effect (RM-ANOVA trial:  $F[1,489]=22.94$ ;  $p<0.0001$ ; Figure 2A). Additionally, RM-ANOVA revealed a

highly significant genotype effect ( $F[1,489]=18.65$ ;  $p<0.0001$ ; Figure 2A). This genotype effect was clarified by a comparison of AuC yielding a significant effect of genotype (ANOVA  $F[2,39]=18.36$ ;  $p<0.0001$ ; Figure 2B). Post hoc analysis revealed no significant differences between 5-HTT+/+ and 5-HTT+/- (t-test,  $t=0.33$ ,  $p>0.1$ ) but 5-HTT-/- mice performed worse compared with both, 5-HTT+/- (t-test,  $t=5.07$ ,  $p<0.001$ ) and 5-HTT+/+ mice (t-test,  $t=5.41$ ,  $p<0.001$ , Figure 2B). Overall a significant reduction in the covered distance in the WM ( $F[1,489]=13.10$ ;  $p<0.0001$ ; data not shown) was found, indicated by a significant trial effect, however no genotype effect was found ( $F[1,489]=0.96$ ;  $p>0.1$ ; data not shown). Regarding the number of stops RM-ANOVA not only revealed a significant trial ( $F[1,489]=7.72$ ;  $p<0.0001$ ; Figure 2C) and genotype ( $F[1,489]=20.93$ ;  $p<0.0001$ ; Figure 2C) effect but also a trial by genotype interaction ( $F[1,489]=12.12$ ;  $p<0.0001$ ; Figure 2C). Post hoc analysis showed that 5-HTT-/- mice stopped significantly more than 5-HTT+/+ in trial 2 and 3 of day 1 (trial 2:  $t=6.97$ ,  $p<0.001$ ; trial 3:  $t=7.13$ ,  $p<0.001$ ) and day 2 (t-tests, trial 2:  $t=4.15$ ,  $p<0.001$ ; trial 3:  $t=5.14$ ,  $p<0.001$ ) as well as in trial 3 of day 3 ( $t=2.99$ ,  $p<0.05$ ) and 5-HTT-/- mice stopped more often than 5-HTT+/- in trial 2 and 3 of day 1 (t-tests, trial 2:  $t=6.97$ ,  $p<0.001$ ; trial 3:  $t=7.30$ ,  $p<0.001$ ) and day 2 (trial 2:  $t=4.15$ ,  $p<0.0001$ ; trial 3:  $t=4.98$ ,  $p<0.0001$ ). The effect diminished from one day to the next until it had subsided on day three between 5-HTT-/- and 5-HTT+/- or on day four between 5-HTT-/- and 5-HTT+/+, respectively. Comparison of the AuCs revealed a significant genotype effect regarding the number of stops (ANOVA:  $F[2,39]=21.21$ ;  $p<0.0001$ ; Figure 2D). Bonferroni corrected post hoc t-tests indicated that these overall genotype effects were accomplished by 5-HTT-/- mice stopping significantly more often than 5-HTT+/- and 5-HTT+/+ mice (5-HTT-/- vs. 5-HTT+/-:  $t=5.76$ ;  $p<0.001$ ; 5-HTT-/- vs. 5-HTT+/+:  $t=5.50$ ;  $p<0.001$ ).

Concerning the reversal trials, an overall reduction in the latency to find the platform (RM-ANOVA:  $F[2,41]=4.15$ ;  $p=0.02$ ) was found. However, no significant genotype effect was found (RM-ANOVA:  $F[2,41]=1.48$ ;  $p=0.24$ ). A weak trend towards a trial by genotype effect was detected ( $F[2,41]=4.20$ ;  $p=0.091$ ), post hoc tests however did not reveal any significant effects.

### BM and WM experience as well as 5-HTT genotype influence corticosterone levels

Statistical analysis of the plasma corticosterone levels from mice of the first hormone cohort that had lived under control conditions (basal level) or experienced one BM or one WM trial, revealed no significant genotype effect (2-way ANOVA,  $F[2,89]=1.14$ ;  $p=0.33$ ). However, a highly significant treatment effect was found (2-way ANOVA,  $F[2,89]=137.40$ ,  $p<0.0001$ , Figure 3A). Bonferroni corrected post hoc t-tests detected that a single trial of the BM as well as a single trial of the WM elevates corticosterone titers significantly compared to basal levels, regardless of the genotype (CONT vs. WM:  $t=23.2$ ;  $p<0.001$ ; CONT vs. BM  $t=18.54$ ;  $p<0.001$ ). Additionally, mean corticosterone concentrations were significantly higher for mice tested in the WM compared to mice tested in the BM (t-test:  $t=4.49$ ;  $p<0.05$ ). Although there was no significant gene by treatment interaction, it seems that 5-HTT-/- mice exhibit higher

corticosterone levels in the WM compared to the BM (Uncorrected t-tests:  $t=1.94$ ,  $p=0.07$ ). This effect was neither found in 5-HTT+/+ mice nor in 5-HTT+/- mice.

Corticosterone measured after a single trial on the second testing day (Figure 3 B) yielded a significant effect of genotype (ANOVA,  $F[2,46]=9.92$ ,  $p<0.001$ ). Bonferroni corrected post-hoc t-tests revealed significantly elevated corticosterone levels in 5-HTT-/- mice compared to 5-HTT+/+ mice (t-test,  $t=4.47$ ,  $p<0.001$ ) as well as significantly elevated corticosterone levels in 5-HTT+/- compared to 5-HTT+/+ mice (t-test,  $t=2.83$ ,  $p<0.05$ ).

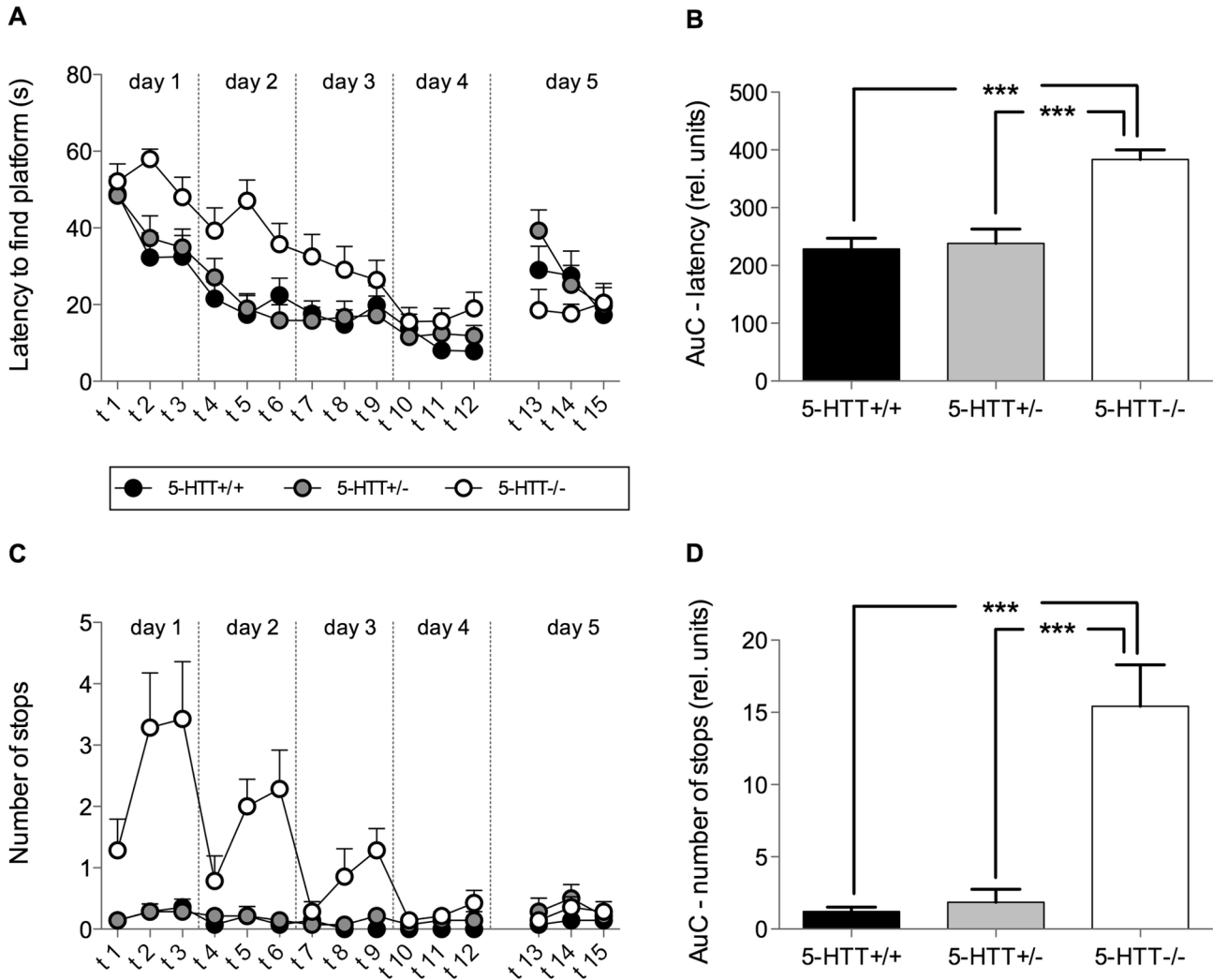
Despite the fact that there was no significant gene by treatment interaction, uncorrected t-tests revealed significantly higher corticosterone levels in 5-HTT-/- mice versus 5-HTT+/+ mice in the BM (t-test,  $t=4.68$ ,  $p<0.001$ ) as well as the WM (t-test,  $t=4.46$ ,  $p<0.001$ ). 5-HTT+/- mice generally exhibited intermediate corticosterone levels. An uncorrected t-test showed that 5-HTT+/- had significantly higher levels than 5-HTT+/+ mice in the BM (t-test,  $t=3.55$ ,  $p<0.01$ ) but not in the WM. Noteworthy, 5-HTT-/- mice tested in the WM tended to show higher corticosterone stress hormone levels compared with mice of the same 5-HTT genotype tested in the BM (uncorrected t-test,  $t=1.88$ ,  $p=0.09$ ). Such a trend was found neither for the 5-HTT+/- nor for the 5-HTT+/+ mice.

### Quantitative assessment of markers for neuronal activity and the phenomenon of adult neurogenesis in the hippocampus

We examined the brains of 5-HTT+/+ and 5-HTT-/- mice, which had been subjected either to the control condition (undisturbed in home cage) or to one of the two spatial learning tests (BM or WM). In addition to the quantitative assessment of cells immunoreactive for IEGs and neurogenesis markers, we also measured the volume of the GCL in each of the brains. Statistical evaluation of these measurements however revealed neither a significant treatment effect (2-way ANOVA,  $F[2,44]=1.120$ ;  $p>0.1$ ) nor a significant genotype effect (2-way ANOVA,  $F[1,44]=0.3807$ ;  $p>0.1$ ) as well as no significant interaction effect (2-way ANOVA,  $F[2,44]=0.251$ ;  $p>0.1$ ). For this reason, we refrained from normalizing cell counts with the volume.

**5-HTT genotype has an influence on the number of cells expressing the two different IEGs cFos and Arc.** Quantitative immunohistochemistry detecting IEGs exclusively revealed 5-HTT genotype effects irrespective of the treatment. Cell counts for cFos and Arc were found to be higher in 5-HTT-/- compared to 5-HTT+/+ mice in any of the examined hippocampus subregions (Figure 4). Statistical analysis detected that the number of cFos-ir cells in 5-HTT-/- mice was significantly higher compared to 5-HTT+/+ mice in the suprapyramidal blade of the GCL ( $F[1,47]=11.845$ ;  $p=0.001$ ) as well as in both blades of the GCL ( $F[1,47]=8.498$ ;  $p=0.005$ ). These effects were discovered exclusively in the septal hippocampus, whereas no significant effects regarding cFos cell counts could be found in the temporal part of the hippocampus (Figure 4C).

Arc-ir cell counts were also found to be significantly higher in the 5-HTT-/- compared to 5-HTT+/+ mice in the suprapyramidal blade of the GCL and in both blades of the GCL. Here, the



**Figure 2. Learning performance in the Morris water maze.** Mice of all three genotypes (5-HTT+/+, 5-HTT+/-, 5-HTT-/-) were tested three times per day for 4 consecutive days (acquisition phase; trials 1 - 12). Trials on day five represent reversal trials (trials 13-15). (A) Learning curve for the latency to find the platform. RM-ANOVA revealed a significant effect of trial (indicating learning performance) and a significant genotype effect. (B) The area under the learning curve (AuC) was calculated for each individual for statistical comparison of learning in the acquisition phase. ANOVA revealed a significant effect of genotype. Post hoc analysis using Bonferroni corrected t-tests revealed significant differences between 5-HTT-/- and both other genotypes. (C) Curve depicting the number of stops for each trial. RM-ANOVA revealed a significant effect of trial and genotype. (D) The AuC for the number of stops revealed a significant effect of genotype. Post hoc analysis using Bonferroni corrected t-tests revealed significant differences between 5-HTT-/- and both other genotypes. Data in all figures represent means + SEM. \*\*\*=p<0.001.

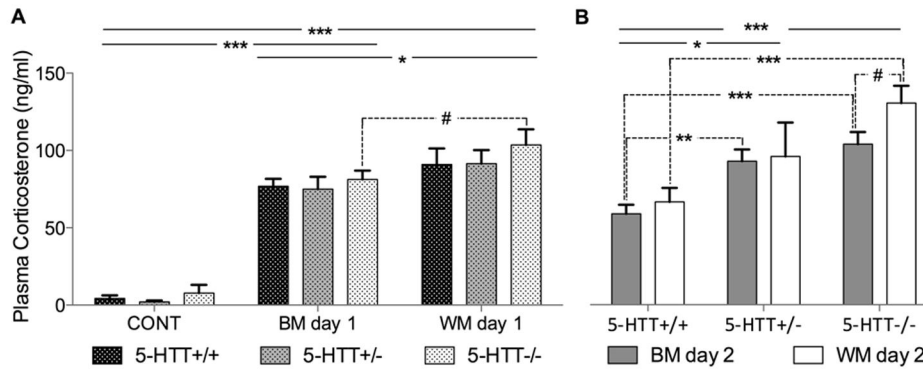
doi: 10.1371/journal.pone.0078238.g002

effect was found in both the septal (suprapyramidal blade:  $F[1,45]=4.648$ ;  $p=0.036$ ; both blades of the GCL:  $F[1, 45]=4.723$ ;  $p=0.035$ ) and the temporal hippocampus (suprapyramidal blade:  $F[1,35]=4.672$ ;  $p=0.038$ ; both blades of the GCL:  $F[1, 35]=4.684$ ;  $p=0.037$ ) (Figure 4D).

**Adult neurogenesis is influenced by 5-HTT genotype as well as spatial learning tests.** The number of cells positive for the proliferation marker Ki-67 is significantly increased in 5-HTT-/- mice compared to 5-HTT+/+ animals (Figure 5C). These 5-HTT genotype effects could be revealed in the

suprapyramidal blade of the SGZ ( $F[1, 45]=4.123$ ;  $p=0.048$ ) of the septal hippocampus as well as in the infrapyramidal blade of the SGZ ( $F[1, 41]=4.166$ ;  $p=0.048$ ) and in both blades of the SGZ ( $F[1, 41]=4.578$ ;  $p=0.038$ ) of the temporal hippocampus. There was however no main effect of treatment. Yet, a significant 5-HTT genotype by treatment interaction of Ki67-ir cells in both blades of the SGZ of the septal hippocampus could be found (Figure 5C). In 5-HTT+/+ mice, the number of Ki67-ir cells was significantly increased in mice subjected to the WM compared to untreated (control) animals ( $t=-2.61$ ;





**Figure 3. Corticosterone stress hormone concentration.** (A) Analysis of plasma from trunk blood samples taken 15 min after the mice either experienced a single trial in the Barnes maze (BM) or in the Morris water maze (WM) on day 1 of the testing procedures and controls (CONT). ANOVA revealed a significant treatment effect. Post hoc analysis using Bonferroni corrected t-tests revealed highly significant differences for all genotypes between control and both tests as well as significant differences between BM and WM. An uncorrected t-test revealed that 5-HTT<sup>-/-</sup> mice tested in the WM exhibited higher values than 5-HTT<sup>-/-</sup> mice tested in the BM at trend-level (indicated by a broken line). (B) Trunk blood samples taken from mice 15 min after the first trial on the second day in the respective learning tests. ANOVA revealed a highly significant effect of genotype. Uncorrected t-tests (indicated by broken lines) revealed highly significant differences between 5-HTT<sup>-/-</sup> and 5-HTT<sup>+/+</sup> mice in BM and WM as well as between 5-HTT<sup>+/-</sup> and 5-HTT<sup>+/+</sup> mice exclusively in the BM. As in (A), 5-HTT<sup>-/-</sup> mice tested in the WM exhibited higher values than 5-HTT<sup>-/-</sup> mice tested in the BM at trend-level. Bars represent the mean concentration, whiskers express + SEM. #= $p < 0.1$ ; \*= $p < 0.05$ ; \*\*= $p < 0.01$ ; \*\*\*= $p < 0.001$ .

doi: 10.1371/journal.pone.0078238.g003

$p = 0.021$ ), whereas the number of Ki67-positive cells in 5-HTT<sup>+/+</sup> BM and control mice as well as in 5-HTT<sup>-/-</sup> mice of all treatment groups did not differ. Moreover, a trend towards higher amounts of Ki67-ir cells in 5-HTT<sup>-/-</sup> compared to 5-HTT<sup>+/+</sup> could be found in the naïve control groups ( $t = -1.99$ ;  $p = 0.084$ ), whereas in the BM and WM groups this 5-HTT genotype effect could not be revealed.

The number of cells expressing NeuroD, a marker for immature neurons, was significantly increased in 5-HTT<sup>-/-</sup> compared to 5-HTT<sup>+/+</sup> mice in the suprapyramidal blade of the SGZ ( $F[1, 40] = 4.181$ ;  $p = 0.048$ ), tendentially increased in the infrapyramidal blade ( $F[1, 40] = 3.568$ ;  $p = 0.066$ ) and significantly increased in both blades of the SGZ ( $F[1, 40] = 4.263$ ;  $p = 0.045$ ) in the temporal part of the hippocampus (Figure 5D).

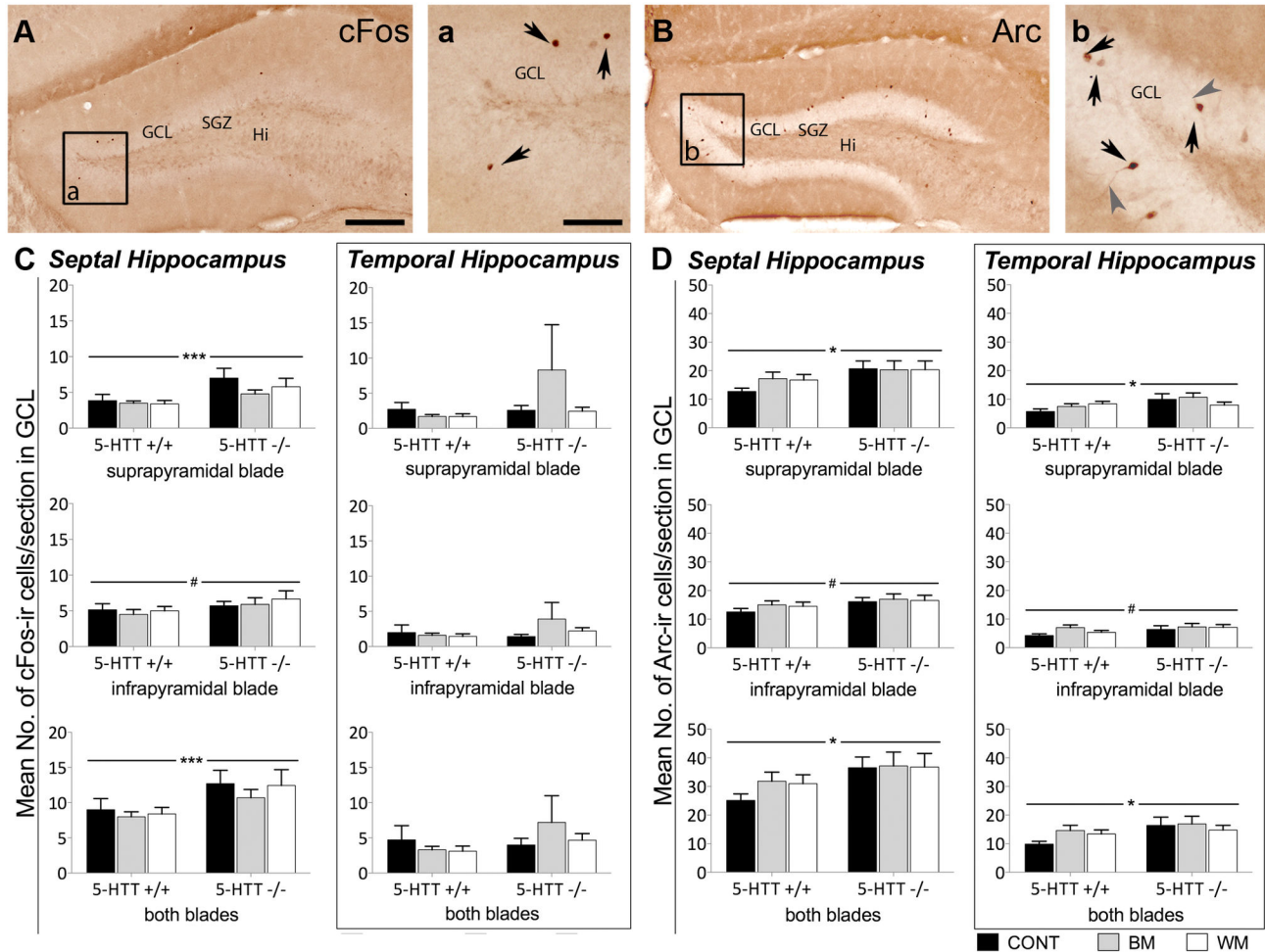
**Learning performance of 5-HTT<sup>-/-</sup> mice in the WM is correlated with the extent of adult neurogenesis.** Applying the Spearman's test the only linear dependence between the escape latency (area under the learning curve; AuC) and the number of new-born immature neurons immunoreactive for NeuroD could be found in the temporal hippocampus of 5-HTT<sup>-/-</sup> mice tested in the WM (Figure 6). In more detail, we discovered a significant negative correlation of AuC in the WM and the number of NeuroD-ir cells in the suprapyramidal blade (Spearman's  $r (r_s) = -0.72$ ,  $p = 0.036$ ), as well as in both blades of the SGZ ( $r_s = -0.69$ ,  $p = 0.043$ ) of the SGZ. Moreover, a trend towards a negative correlation could also be found in the infrapyramidal blade of the SGZ ( $r_s = -0.63$ ,  $p = 0.076$ ).

## Discussion

The aim of this study was to evaluate whether mice with altered levels of brain 5-HT as a consequence of 5-HTT deficiency perform differently in two spatial memory tests, the WM and the BM, prospectively differing in aversiveness. Moreover, we asked whether neurobiological equivalents to possible learning differences exist. For this purpose, we investigated the phenomenon of adult neurogenesis and IEG expression as a marker for neuronal activity in the hippocampus in addition to blood corticosterone levels as a marker for stress reactivity of these mice.

### 5-HTT deficient mice perform differently compared to 5-HTT<sup>+/+</sup> and 5-HTT<sup>+/-</sup> mice in the WM, but not in the BM

From numerous studies, it is known that the lifelong reduced or absent 5-HTT function is associated with multiple changes at the behavioral level compared to 5-HTT<sup>+/+</sup> littermates (for review see [24]). The behavioral phenotype of 5-HTT mutant mice primarily comprises increased anxiety- and depression-related behavior, reduced aggression, but also deficits in fear extinction recall [5,7,24,27,85]. Besides this, only little is known about the influence of the 5-HTT on cognitive functions. Thus, this study provides first insights into spatial learning capacities of mice deficient for the 5-HTT using two different learning tests: the WM and the BM. In the WM, 5-HTT null mutant mice required more time to find the hidden platform compared to 5-HTT<sup>+/-</sup> and 5-HTT<sup>+/+</sup> mice. But as their overall swimming distance is not altered, the more frequent floating behavior (stops) leading to reduced overall swimming speed levels of 5-HTT<sup>-/-</sup> mice finally resulted in this delayed learning



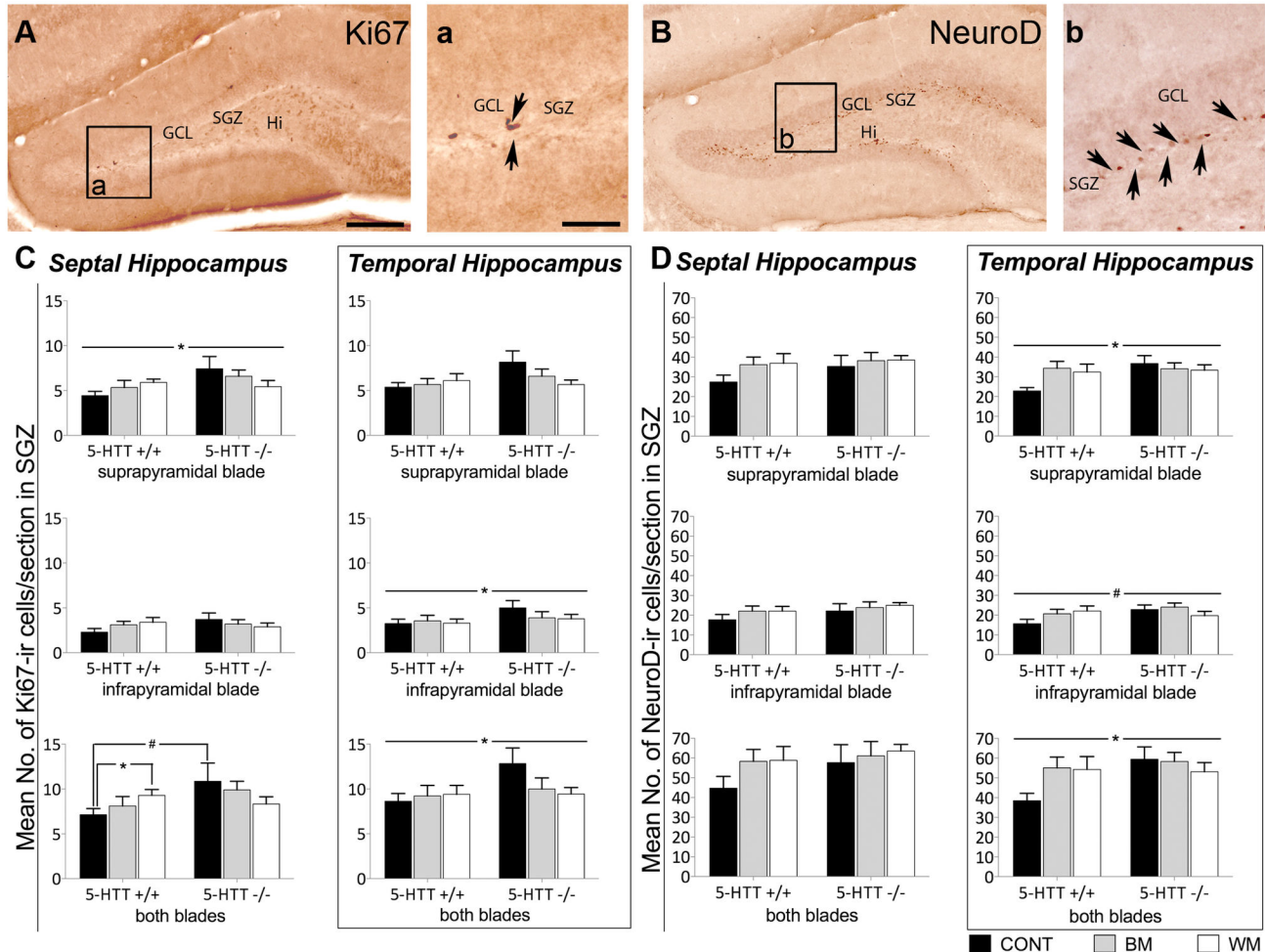
**Figure 4. Increased number of cells expressing the immediate early genes cFos and Arc in the granule cell layer of the hippocampus of 5-HTT<sup>-/-</sup> compared to 5-HTT<sup>+/+</sup> mice.** In the quantitative immunohistochemistry study septal and temporal hippocampus as well as suprapyramidal and infrapyramidal blade of the GCL were analyzed separately. Significant differences of the number of cFos and Arc-immunoreactive (ir) cells were exclusively revealed between mice of the two 5-HTT genotypes investigated. Different treatments such as the experience of BM, WM or control situation did not significantly impact the expression of these two immediate early genes. (A) Representative image of the dentate gyrus of the hippocampus after cFos immunohistochemistry. Most of the cFos-ir cell nuclei (dark brown) are located in the granule cell layer as indicated by arrows in (a). (C) Quantitative evaluation of cFos-ir cells. (B) Representative image of the dentate gyrus after Arc immunohistochemistry. Most of the Arc-ir cells are located in the GCL. In (b) Arc-ir cells bodies are indicated by black arrows and stained processes by grey arrow heads. (D) Quantitative evaluation of Arc-ir cells. Two-way ANOVA, Bars represent the mean number of ir-cells per section +SEM; #= $p < 0.1$ ; \*= $p < 0.05$ ; \*\*\*= $p \leq 0.005$ . GCL, granule cell layer; SGZ, subgranular zone; Hi, hilus; CONT, control mice; BM, Barnes maze tested mice; WM, Morris water maze tested mice. Scale bar in A represents 200  $\mu$ m for A and B, Scale bar in a represents 60  $\mu$ m for a and b.

doi: 10.1371/journal.pone.0078238.g004

performance. This interjected movement of 5-HTT null mutant mice is unique to the WM test, as in the BM test 5-HTT<sup>-/-</sup> mice did not stop walking more frequently than 5-HTT<sup>+/-</sup> and 5-HTT<sup>+/+</sup> mice. Interestingly, 5-HTT<sup>-/-</sup> mice advanced in the course of the 12 WM test trials to 5-HTT<sup>+/+</sup> levels, so that in the last trials mice of all three 5-HTT genotypes showed similar learning performance. These results unambiguously point to a comparable spatial learning capacity of 5-HTT<sup>-/-</sup>, 5-HTT<sup>+/-</sup> and

5-HTT<sup>+/+</sup> mice, but that there are some time-dependent performance differences in the WM, but not in the BM.

Increased floating in the water maze could be explained in the light of a generally hypoactive phenotype of 5-HTT<sup>-/-</sup> mice as described in home cage behavior as well as in a number of different behavioral tests [5,24,27,86-89]. However, upon a closer look the observed floating behavior in 5-HTT<sup>-/-</sup> mice might as well resemble the "immobility time" known from the

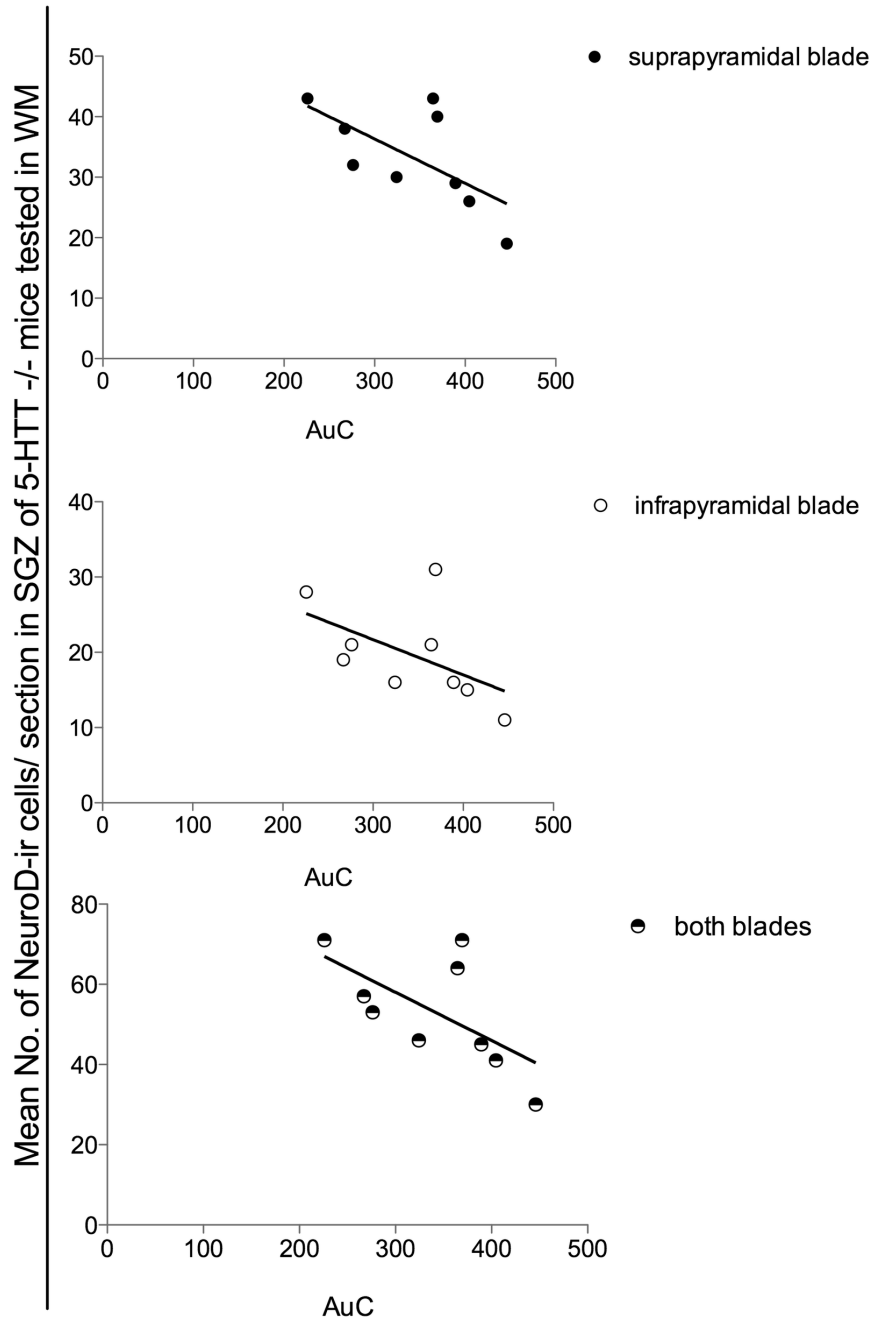


**Figure 5. Increased number of cells expressing the two adult neurogenesis marker Ki67 and NeuroD in the granule cell layer of the hippocampus of 5-HTT<sup>-/-</sup> compared to 5-HTT<sup>+/+</sup> mice and gene by environment interaction of the number of Ki67-positive proliferating cells in both blades of the SGZ of the septal hippocampus.** In the quantitative immunohistochemistry study septal and temporal hippocampus as well as suprapyramidal and infrapyramidal blade of the GCL were analyzed separately. Significant differences of the number of Ki67 and NeuroD-immunoreactive (ir) cells were primarily revealed between mice of the two 5-HTT genotypes (5-HTT<sup>-/-</sup> and 5-HTT<sup>+/+</sup>) investigated. Only in both blades of the SGZ the number of Ki67-ir cells was significantly increased in 5-HTT<sup>+/+</sup> mice after WM treatment vs. naïve 5-HTT<sup>+/+</sup> mice (CONT). Additionally, a trend towards higher amounts of Ki67-ir cells in naïve 5-HTT<sup>-/-</sup> compared to naïve 5-HTT<sup>+/+</sup> was found. (A) Representative image of the dentate gyrus of the hippocampus after Ki67 immunohistochemistry. Most of the Ki67-ir cell nuclei (dark brown) are located in the subgranular zone (SGZ) as indicated by arrows in (a). (C) Quantitative evaluation of Ki67-ir cells. (B) Representative image of the dentate gyrus after NeuroD immunohistochemistry. Most of the NeuroD-ir cell nuclei are located in the SGZ as indicated by arrows in (b). (D) Quantitative evaluation of NeuroD-ir cells. Two-way ANOVA, data represent arithmetic means of the number of ir-cells per section + SEM; #*p*<0.1; \**p*<0.05. GCL, granule cell layer; SGZ, subgranular zone; Hi, hilus; CONT, control mice; BM, Barnes maze tested mice; WM, Morris water maze tested mice. Scale bar in A represents 200  $\mu$ m for A and B, Scale bar in a represent 60  $\mu$ m for a and b.

doi: 10.1371/journal.pone.0078238.g005

forced swim test, which is discussed to be a behavioral correlate of despair and thus indicates depression-like behavior [90]. Applying forced swim or tail suspension test several studies already showed that 5-HTT<sup>-/-</sup> mice exhibit increased time of immobility and therefore of increased depression-like behavior [5,86,91]. Thus, floating in the WM could reflect a

state of despair indicating that 5-HTT<sup>-/-</sup> mice gave up active coping with the challenging situation earlier than both other genotypes. This is in line with a recent study with 5-HTT deficient mice suggesting that different coping styles of stressor processing seemed dependent upon the availability of 5-HTT protein [26].



	Spearman r	P value (two-tailed)	Sign. (alpha=0.05)
suprapyramidal blade	-0,7197	0,0369	Yes
infrapyramidal blade	-0,6303	0,076	No (Trend)
both blades	-0,6946	0,0433	Yes

**Figure 6. In 5-HTT<sup>-/-</sup> mice subjected to the WM a low number of NeuroD positive cells is correlated with a poor performance in the Morris water maze.** Applying the Spearman’s test in the quantitative immunohistochemistry study revealed a linear dependence between the learning performance (decreasing learning performance is expressed as increasing area under the learning curve; AuC) and the number of NeuroD-immunoreactive (ir) cells could be found in the temporal hippocampus of 5-HTT<sup>-/-</sup> WM mice. A significant negative correlation between AuC and the number of NeuroD-ir (Data represent arithmetic mean per section) cells in both, the suprapyramidal blade of the subgranular zone (SGZ) as well as in both blades of the SGZ. A trend towards a negative correlation was found in the infrapyramidal blade of the SGZ.

doi: 10.1371/journal.pone.0078238.g006

Interestingly, we did not detect initially more floatings in 5-HTT<sup>-/-</sup> mice compared to 5-HTT<sup>+/-</sup> and 5-HTT<sup>+/+</sup> mice, but the number of floatings increased in the course of three subsequently performed trials per day (with an inter trial interval on each day of 15 minutes) during the first three days of the WM training session. This resembles the results of two different studies performed by the group of Wellman [5] and Carroll [91] who showed that 5-HTT<sup>-/-</sup> mice exhibit significantly increased depression-related behavior compared to 5-HTT<sup>+/-</sup> and 5-HTT<sup>+/+</sup> mice exclusively in response to repeated forced swimming, but not to a single exposure to the forced swim test. However, as the exaggerated floating behavior returned to baseline level during the first trial of the following days (day 2 and 3), and the fact that this increased immobility of 5-HTT<sup>-/-</sup> mice was unique to the more aversive WM test gives the idea that 5-HTT<sup>-/-</sup> mice are more sensitive to the aversive situation and show more despair during the second and third WM trial than their 5-HTT<sup>+/-</sup> and 5-HTT<sup>+/+</sup> littermates instead of actively coping with the stressful situation.

#### **Increased stress sensitivity of mice deficient for the 5-HTT may be responsible for their altered performance in the aversive WM**

In contrast to the WM the BM does not utilize the fear of drowning as a strongly aversive stimulus, and therefore was already shown to result in lower blood plasma stress hormone levels [76]. Moreover, spatial learning was shown to be inversely correlated with corticosterone levels in the WM, but not in the BM, suggesting that performance in the WM may be more affected by test-induced stress [76]. The aversiveness of the WM is further substantiated by the fact that WM induces hypothermia as a 2 min swim in the WM is reported to decrease the core body temperature by 4.5°C [92] and five swims of 45 sec with a very short inter trial interval are reported to lead to a rectal temperature drop of 9°C [93]. It is well-known from other behavioral tasks that high levels of stress can influence the animal's performance [94]. In accordance with the study of Harrison and co-workers [76] we detected significantly increased corticosterone levels in WM-tested compared to BM-tested mice 15 min after the start of one single trial, but interestingly not in mice after the first trial on the second testing day. Although there was no significant gene by treatment interaction WM-tested 5-HTT deficient mice tend to exhibit higher corticosterone concentrations compared to mice of the same 5-HTT genotype after BM experience in both stress hormone cohorts. Moreover, repeatedly experiencing any of the two spatial learning tests resulted in 5-HTT genotype differences with highest plasma corticosterone levels in 5-HTT<sup>-/-</sup> mice, while 5-HTT<sup>+/-</sup> mice seemed to habituate regarding their stress response. These 5-HTT genotype differences are in accordance with former studies analyzing glucocorticoid and Adrenocorticotrophic hormone (ACTH) levels in mice of different 5-HTT genotypes in response to stressors such as handling and injection [95,96]. Furthermore, an exaggerated adrenalin/epinephrine release into plasma could be shown as a reaction to 15 min of immobilization [97], whereas tyrosine hydroxylase mRNA expression after this type of acute stress in 5-HTT<sup>+/+</sup> and 5-HTT<sup>-/-</sup> mice was not

changed. In line with most previous studies our 5-HTT<sup>-/-</sup>, 5-HTT<sup>+/-</sup> and 5-HTT<sup>+/+</sup> mice exhibit similar basal glucocorticoid levels [34,98-100]. That is why the observed 5-HTT genotype differences after repeated spatial learning test performance can be regarded as a result of gene by stress experience interaction and point to an altered stress sensitivity of 5-HTT deficient mice. Therefore, the assumed different levels of aversiveness of BM and WM in combination with an increased stress sensitivity of the tested 5-HTT deficient animals might explain inferior learning performance in the WM as an altered responsiveness of 5-HTT<sup>-/-</sup> mice towards a seemingly inescapable aversive WM environment without actually affecting spatial learning abilities *per se*.

Comparable to the results of 5-HTT deficient mice or rats, human individuals carrying the S-allele of the 5-HTT gene exhibit a greater reactivity to stress. This relation is supported by human imaging studies, which have found that carriers of the S-allele display greater amygdala activation in response to fearful stimuli [101], that is dependent on 5-HTT availability [102]. Moreover, stressful life events were shown to correlate with the severity and number of episodes of major depression in the individuals carrying lower expressing 5-HTT genes [103,104].

#### **Increased number of IEG-positive cells in the hippocampus of 5-HTT<sup>-/-</sup> mice compared to 5-HTT<sup>+/-</sup> littermates point to higher baseline hippocampal activity levels in mice with lifelong 5-HTT deficiency**

We were aware that the chosen time-point was not ideal for IEG expression analysis related to effects of the exposure to the different test apparatuses as in immunocytochemistry as well as in mRNA-studies IEG protein/mRNA expression had been shown to peak within the first hours (protein) or even minutes (mRNA expression) after different learning tests or stress exposure and then return to baseline after a maximum of 24 hrs [51,105-107]. But, as the survival time of 60 hrs after 5 days of learning test exposure seems to be perfect for the analysis of early neurogenesis stages we decided to quantify the number of cFos- and Arc-positive cells in the DG of our mice (behavior-cohort) sacrificed 60 hrs after the last spatial learning test. This was done, as we aimed at testing the hypothesis suggested by [22] that 5-HTT<sup>-/-</sup> brains display a "stressed" morphological phenotype and hoped to find increased numbers of IEG-expressing cells in the hippocampus of 5-HTT<sup>-/-</sup> compared to 5-HTT<sup>+/-</sup> mice.

As expected, we did not detect differences between the number of Arc positive cells in mice of the different treatment groups (CONT, BM, WM), but overall 5-HTT genotype effects with significantly higher number of Arc-ir cells in the DG of 5-HTT<sup>-/-</sup> mice compared to 5-HTT<sup>+/-</sup> mice. In contrast to our results, significantly reduced Arc mRNA expression was detected in the whole hippocampus of 5-HTT deficient rats, irrespective of hippocampal subregions and different layers [108]. Additionally, Eriksson et al. found that Flinders sensitive line (FSL) rats display emotional memory impairments accompanied by reduced Arc mRNA expression specifically in brain regions implicated in cognitive processing such as the dentate gyrus [109]. These results, however, do not necessarily

contradict our results, as our study analyzed the total number of Arc-ir cells and exclusively focused on the granule cell layer of the DG. The fact that both, the Molteni study using 5-HTT deficient rats and our study using 5-HTT deficient mice revealed 5-HTT genotype dependent alterations in baseline Arc expression may be explained by a compensatory mechanism in response to the lifelong altered extracellular and intracellular 5-HT-levels, which could be the neurobiological correlate of heightened anxiety. This notion is supported by the fact that serotonergic signaling and Arc thus have opposing effects on AMPA type glutamate receptor (AMPA)-trafficking. While serotonergic signaling enhances trans-synaptic signaling efficiency via the insertion of AMPARs into synapses at postsynaptic neurons [110], Arc expression is reciprocally regulated by activity and facilitates the endocytosis of certain AMPARs resulting in reduced AMPARs surface expression [111]. The latter possibly resulting in an increase of the threshold for LTP followed by altered learning and memory processes. From the results of our quantitative immunohistochemistry study we cannot tell if Arc is overexpressed in single cells of the DG in 5-HTT<sup>-/-</sup> compared to 5-HTT<sup>+/+</sup> mice. However, one could speculate that having more cells expressing Arc at baseline coincides with the overexpression in single cells.

Regarding cFos, significantly increased numbers of cFos-ir cells were found in the septal hippocampus of 5-HTT<sup>-/-</sup> compared to 5-HTT<sup>+/+</sup> mice. From a number of older studies it is known that cFos is upregulated in the DG in response to various acute stressors including immobilization, noxious stimulation and hyper osmotic stress [65,112] as well as in response to chronic defeat [113]. Interestingly, chronic restraint stress has also been found to cause a significant increase in 5-HT [114]. This gives reason to assume that 5-HTT<sup>-/-</sup> mice, which have higher basal extracellular 5-HT levels and thus resemble chronically stressed mice, are closer to a “stress threshold” than 5-HTT<sup>+/+</sup> mice. Beyond that, it is known that chronic restraint stress causes atrophy of apical dendrites in CA3 pyramidal neurons of the hippocampus [115-120] and that this atrophy is correlated with impaired spatial memory performance. Interestingly, the atrophy as well as the impairment could be reversed by lowering extracellular 5-HT pharmacologically in the septal hippocampus [121,122].

Finally, the increased baseline expression of the two IEGs Arc and cFos shown in this study may have promoted the pronounced stress sensitivity of 5-HTT<sup>-/-</sup> mice. Thus, elevated Arc and cFos protein levels could represent a “stressed” brain phenotype in consequence of lifelong 5-HTT deficiency, thereby presenting the neurobiological correlate of increased stress sensitivity and heightened anxiety of 5-HTT<sup>-/-</sup> animals.

#### **Increased adult neurogenesis in the hippocampus of 5-HTT<sup>-/-</sup> mice compared to 5-HTT<sup>+/+</sup> littermates indicates a compensatory mechanism for lifelong increased extracellular 5-HT levels**

5-HTT genotype effects regarding proliferation (Ki67) and neurogenesis (NeuroD) comprise 5-HTT<sup>-/-</sup> mice displaying more immunoreactive cells than 5-HTT<sup>+/+</sup> animals. This result is quite feasible when keeping in mind that, first, the lack of 5-

HT clearance in these mice results in a persistent 5 to 13-fold increase of 5-HT concentrations in the extracellular space [16,17], and second, that 5-HT is a positive modulator of stem cell proliferation and neurogenesis in the adult hippocampus [123-125]. Schmitt et al. have already achieved similar results in 2007, albeit only in aged (14 months old), and not in young adult mice. More recently, immunoreactivity for the neurogenesis marker doublecortin was discovered to be increased in the dentate gyrus of 5-HTT<sup>-/-</sup> rats in comparison with 5-HTT<sup>+/+</sup> rats [126]. In this study Schipper et al. were able to normalize both, increased anxiety-like behavior of 5-HTT<sup>-/-</sup> rats and altered neurogenesis level by feeding 5-HTT<sup>-/-</sup> animals a special diet. This led them conclude, that the behavioral effect of their special diet was probably conveyed via normalizing neurogenesis [126]. Thus, increased stem cell proliferation and neurogenesis in 5-HTT<sup>-/-</sup> animals can be discussed as neurobiological correlates to the increased anxiety-like behavior of 5-HTT<sup>-/-</sup> mice and rats.

Beyond the overall increased aN levels in 5-HTT deficient compared to 5-HTT<sup>+/+</sup> mice our statistical tests revealed a significant gene by environment interaction of Ki67-ir cells in the SGZ of total DG. The number of Ki67-ir cells was shown to be different between naïve and WM-tested 5-HTT<sup>+/+</sup> mice, with those tested in the WM displaying more proliferating cells in the SGZ than naïve animals. Moreover, naïve 5-HTT<sup>-/-</sup> mice already exhibited a trend towards higher numbers of proliferating cells compared to 5-HTT<sup>+/+</sup> mice, whereas there was neither a significant difference between the two genotypes after BM or WM nor a significant effect of treatment within 5-HTT<sup>-/-</sup> mice. Considering that stress decreases aN [70,72,127,128], and that 5-HT increases aN [73], these lacking effects might be the result of the antagonistic effects of increased 5-HT-levels on the one hand, and the increased stress sensitivity of 5-HTT<sup>-/-</sup> mice on the other hand.

There were two studies dealing with the impact of WM-testing on hippocampal aN in the rat, which resulted in contradictory outcomes. The first one, which is also probably the most well known study to convey the enhancing effects of spatial learning on aN, was carried out by Gould and colleagues in 1999 [74] In their experiment rats were exposed to 4 WM trials per day for 4 consecutive days with maximum trial duration of 60 s. The number of proliferating cells was increased in rats that had undergone hippocampus-dependent spatial learning in the WM compared to all control groups (including a swim-stress group)[74]. In the second study, Namestkova and co-workers [129] subjected rats to the same procedure, but for 15 consecutive days. This long-lasting treatment caused a significant decrease in progenitor cell proliferation in the granule cell layer of the hippocampus compared to controls [129]. In our study mice were subjected to WM training on 5 consecutive days and thus resembling the Gould et al. study more than the Namestkova et al. study. Therefore, the detected increase of proliferating cells in WM trained 5-HTT<sup>+/+</sup> mice found in our study may be regarded as a result of spatial learning.

The finding that there was no significant difference between the differently treated 5-HTT<sup>-/-</sup> mice, including the fact that there was already a trend towards higher numbers of

proliferating cells in naïve 5-HTT<sup>-/-</sup> vs. 5-HTT<sup>+/+</sup> mice suggests that this embodies a ceiling effect, that 5-HTT<sup>-/-</sup> mice are closer to a “stress threshold” than 5-HTT<sup>+/+</sup> mice. A comparable ceiling effect was already described by Nietzer and co-workers, who found higher spinogenesis in the amygdala in naïve 5-HTT<sup>-/-</sup> vs. 5-HTT<sup>+/+</sup> mice [22]. As stress-dependent effects were not detected in 5-HTT<sup>-/-</sup> animals, the authors concluded that these mice display a “stressed” morphological phenotype as a consequence of long-life 5-HTT deficiency *per se* [22]. We suggest that such ceiling effects act as a part of a compensatory mechanism, which probably sensitizes or desensitizes for future additional stress experience. Additionally, it may explain why spatial learning over a moderate time in the WM – normally a positive modulator of progenitor cell proliferation [74] – had no effect on proliferation in the SGZ of 5-HTT deficient mice.

Regarding the number of NeuroD-ir cells, a positive correlation between the number of NeuroD-ir cells in 5-HTT<sup>-/-</sup> mice subjected to the WM and their overall performance (AuC) could be found revealing that mice with lower numbers of NeuroD-ir cells performed worse in the WM. The modulation of aN by WM test experience and the detected correlation between the number of newborn neurons and the learning performances point to an important role of this neuroplasticity phenomenon in the handling of stress and in learning and memory processes. This discovery is consistent with a study of human hippocampal neurogenesis by Coras and colleagues showing that patients with low numbers of proliferating progenitor cells and new-born neurons *in vivo* and *in vitro* showed a severe learning and memory impairments [130].

### Different hippocampal subregions with different connectivities and functions

Moser and Moser suggested that the hippocampus is functionally different along its septotemporal axis [131]. In rodents, spatial and episodic memory appears to depend on septal but not temporal hippocampus [64,132,133]. On the other hand, the temporal but not the septal hippocampus is thought to mediate stress responses and thus emotional behavior [134–137]. In rats it is well established that serotonergic neurons of the median raphe nucleus primarily project to the septal part of the hippocampal formation rather than in its temporal part [138]. Additionally, within the septal

hippocampal formation median raphe neurons terminate throughout the rostrocaudal extent of the DG. Within the DG these projections are closely confined to the SGZ with more representations in the suprapyramidal blade than in the infrapyramidal blade of the DG [138]. Considering this, it is not surprising, that most significant 5-HTT genotype effects regarding cell activation (*Arc/ cFos*) or neurogenesis (*Ki67/ NeuroD*) were found in the suprapyramidal blade of the DG. However, only environmental factors like spatial experience, transient forebrain ischemia, or kainic acid administration, have been found to cause region specific effects regarding IEG-expression, aN and or even morphological changes [139–143]. So far, this is the first study showing region-specific genotype differences in aN and the number of IEG expressing cells.

In summary, our BM and WM results point to comparable spatial learning capabilities of mice with different 5-HTT genotypes, but the performance differences of 5-HTT deficient mice in the WM task support a role for the 5-HTT in the hippocampally-mediated interaction between stress and spatial learning performance. Moreover, we suggest that increased IEG expression and aN levels observed in the hippocampus of 5-HTT deficient mice can be the neurobiological correlate of emotion circuit dysfunction and heightened anxiety as 5-HTT<sup>-/-</sup> animals *per se* display a “stressed” phenotype as a consequence of long-life 5-HTT deficiency. The experience of BM and WM tests results in either altered or even absent neuroadaptive increases in IEG and aN marker expression in 5-HTT<sup>-/-</sup> animals reducing adequate compensation processes and resulting in exaggerated behavioral responses e.g. in the more aversive WM.

### Acknowledgements

We wish to thank Sabine Kruse, Tanja Möllers, Marion Winnig and Katharina Zürrlein for skillful technical assistance.

### Author Contributions

Conceived and designed the experiments: AGS LL. Performed the experiments: MMK SG SYK MW RSH SK FJ AGS LL. Analyzed the data: MMK SG SYK MW SK SP AGS LL. Contributed reagents/materials/analysis tools: NS KPL AGS. Wrote the manuscript: MMK AGS LL.

### References

- Homberg JR, Lesch K-P (2011) Looking on the Bright Side of Serotonin Transporter Gene Variation. *Biol Psychiatry* 69: 513–519. doi:10.1016/j.biopsych.2010.09.024. PubMed: 21047622.
- Lowry CA, Johnson PL, Hay-Schmidt A, Mikkelsen J, Shekhar A (2005) Modulation of anxiety circuits by serotonergic systems. *Stress* 8: 233–246. doi:10.1080/10253890500492787. PubMed: 16423712.
- Holmes A (2008) Genetic variation in cortico-amygdala serotonin function and risk for stress-related disease. *Neurosci Biobehav Rev* 32: 1293–1314. doi:10.1016/j.neubiorev.2008.03.006. PubMed: 18439676.
- Lanfumeey L, Mongeau R, Cohen-Salmon C, Hamon M (2008) Corticosteroid-serotonin interactions in the neurobiological mechanisms of stress-related disorders. *Neurosci Biobehav Rev* 32: 1174–1184. doi: 10.1016/j.neubiorev.2008.04.006. PubMed: 18534678.
- Wellman CL, Izquierdo A, Garrett JE, Martin KP, Carroll J et al. (2007) Impaired stress-coping and fear extinction and abnormal corticolimbic morphology in serotonin transporter knock-out mice. *J Neurosci* 27: 684–691. doi:10.1523/JNEUROSCI.4595-06.2007. PubMed: 17234600.
- Blakely RD, Berson HE, Fremeau RT, Caron MG, Peek MM et al. (1991) Cloning and expression of a functional serotonin transporter from rat brain. *Nature* 354: 66–70. doi:10.1038/354066a0. PubMed: 1944572.
- Narayanan V, Heiming RS, Jansen F, Lesting J, Sachser N et al. (2011) Social defeat: impact on fear extinction and amygdala-prefrontal cortical theta synchrony in 5-HTT deficient mice. *PLOS ONE* 6: e22600. doi:10.1371/journal.pone.0022600. PubMed: 21818344.
- Bengel D, Murphy DL, Andrews AM, Wichems CH, Feltner D et al. (1998) Altered brain serotonin homeostasis and locomotor insensitivity to 3, 4-methylenedioxymethamphetamine (“Ecstasy”) in serotonin transporter-deficient mice. *Mol Pharmacol* 53: 649–655. PubMed: 9547354.

9. Lewejohann L, Kloke V, Heiming RS, Jansen F, Kaiser S et al. (2010) Social status and day-to-day behaviour of male serotonin transporter knockout mice. *Behav Brain Res* 211: 220–228. doi:10.1016/j.bbr.2010.03.035. PubMed: 20347882.
10. Gardner KL, Hale MW, Lightman SL, Plotsky PM, Lowry CA (2009) Adverse early life experience and social stress during adulthood interact to increase serotonin transporter mRNA expression. *Brain Res* 1305: 47–63. doi:10.1016/j.brainres.2009.09.065. PubMed: 19781533.
11. Lesch KP, Bengel D, Heils A, Sabol SZ, Greenberg BD et al. (1996) Association of anxiety-related traits with a polymorphism in the serotonin transporter gene regulatory region. *Science* 274: 1527–1531. doi:10.1126/science.274.5292.1527. PubMed: 8929413.
12. Lesch K (1998) Serotonin transporter and psychiatric disorders: Listening to the gene. *Neuroscientist* 4: 25–34. doi:10.1177/107385849800400110.
13. Canli T, Lesch K-P (2007) Long story short: the serotonin transporter in emotion regulation and social cognition. *Nat Neurosci* 10: 1103–1109. doi:10.1038/nn1964. PubMed: 17726476.
14. Kubik S, Miyashita T, Guzowski JF (2007) Using immediate-early genes to map hippocampal subregional functions. *Learn Mem* 14: 758–770. doi:10.1101/lm.698107. PubMed: 18007019.
15. Weinberg MS, Girotti M, Spencer RL (2007) Restraint-induced fra-2 and c-fos expression in the rat forebrain: Relationship to stress duration. *Neuroscience* 150: 478–486. doi:10.1016/j.neuroscience.2007.09.013. PubMed: 17936518.
16. Fabre V, Beaufour C, Evrard A, Rioux A, Hanoun N et al. (2000) Altered expression and functions of serotonin 5-HT1A and 5-HT1B receptors in knock-out mice lacking the 5-HT transporter. *Eur J Neurosci* 12: 2299–2310. doi:10.1046/j.1460-9568.2000.00126.x. PubMed: 10947809.
17. Shen H-W, Hagino Y, Kobayashi H, Shinohara-Tanaka K, Ikeda K et al. (2004) Regional Differences in Extracellular Dopamine and Serotonin Assessed by In Vivo Microdialysis in Mice Lacking Dopamine and/or Serotonin Transporters. *Neuropsychopharmacol* 29: 1790–1799. doi:10.1038/sj.npp.1300476.
18. Chiu R, Boyle WJ, Meek J, Smeal T, Hunter T et al. (1988) The c-Fos protein interacts with c-Jun/AP-1 to stimulate transcription of AP-1 responsive genes. *Cell* 54: 541–552. doi:10.1016/0092-8674(88)90076-1. PubMed: 3135940.
19. Schmitt A, Mössner R, Gossmann A, Fischer IG, Gorboulev V et al. (2003) Organic cation transporter capable of transporting serotonin is up-regulated in serotonin transporter-deficient mice. *J Neurosci Res* 71: 701–709. doi:10.1002/jnr.10521. PubMed: 12584728.
20. Rauscher FJ, Sambucetti LC, Curran T, Distel RJ, Spiegelman BM (1988) Common DNA binding site for Fos protein complexes and transcription factor AP-1. *Cell* 52: 471–480. doi:10.1016/S0092-8674(88)80039-4. PubMed: 3125983.
21. Schmitt A, Benninghoff J, Moessner R, Rizzi M, Paizanis E et al. (2007) Adult neurogenesis in serotonin transporter deficient mice. *J Neural Transm* 114: 1107–1119. doi:10.1007/s00702-007-0724-6. PubMed: 17510734.
22. Nietzer SL, Bonn M, Jansen F, Heiming RS, Lewejohann L et al. (2011) Serotonin transporter knockout and repeated social defeat stress: impact on neuronal morphology and plasticity in limbic brain areas. *Behav Brain Res* 220: 42–54. doi:10.1016/j.bbr.2011.01.011. PubMed: 21238500.
23. Miyashita T, Kubik S, Haghghi N, Steward O, Guzowski JF (2009) Rapid Activation of Plasticity-Associated Gene Transcription in Hippocampal Neurons Provides a Mechanism for Encoding of One-Trial Experience. *J Neurosci* 29: 898–906. doi:10.1523/JNEUROSCI.4588-08.2009. PubMed: 19176799.
24. Murphy DL, Lesch K-P (2008) Targeting the murine serotonin transporter: insights into human neurobiology. *Nat Rev Neurosci* 9: 85–96. doi:10.1038/nrn2284. PubMed: 18209729.
25. Braga Calais J, Valvassori SS, Resende WR, Feiger G, Athié MCP et al. (2013) Long-term decrease in immediate early gene expression after electroconvulsive seizures. *J Neural Transm* 120: 259–266. doi:10.1007/s00702-012-0861-4. PubMed: 22875635.
26. Hohoff C, Gorji A, Kaiser S, Willscher E, Korsching E et al. (2013) Effect of acute stressor and serotonin transporter genotype on amygdala first wave transcriptome in mice. *PLOS ONE* 8: e58880. doi:10.1371/journal.pone.0058880. PubMed: 23536833.
27. Holmes A, Murphy DL, Crawley JN (2003) Abnormal behavioral phenotypes of serotonin transporter knockout mice: parallels with human anxiety and depression. *Biol Psychiatry* 54: 953–959. doi:10.1016/j.biopsych.2003.09.003. PubMed: 14625137.
28. Cullinan WE, Herman JP, Battaglia DF, Akil H, Watson SJ (1995) Pattern and time course of immediate early gene expression in rat brain following acute stress. *Neuroscience* 64: 477–505. doi:10.1016/0306-4522(94)00355-9. PubMed: 7700534.
29. Mifsud KR, Gutiérrez-Mecinas M, Trollope AF, Collins A, Saunderson EA et al. (2011) Epigenetic mechanisms in stress and adaptation. *Brain Behav Immun* 25: 1305–1315. doi:10.1016/j.bbi.2011.06.005. PubMed: 21704151.
30. Santín LJ, Aguirre JA, Rubio S, Begega A, Miranda R et al. (2003) c-Fos expression in supramammillary and medial mammillary nuclei following spatial reference and working memory tasks. *Physiol Behav* 78: 733–739. doi:10.1016/S0031-9384(03)00060-X. PubMed: 12782230.
31. Teather LA, Packard MG, Smith DE, Ellis-Behnke RG, Bazan NG (2005) Differential induction of c-Jun and Fos-like proteins in rat hippocampus and dorsal striatum after training in two water maze tasks. *Neurobiol Learn Mem* 84: 75–84. doi:10.1016/j.nlm.2005.03.006. PubMed: 15936959.
32. Heiming RS, Jansen F, Lewejohann L, Kaiser S, Schmitt A et al. (2009) Living in a dangerous world: the shaping of behavioral profile by early environment and 5-HTT genotype. *Front. Behav Neurosci* 3: 26. doi:10.3389/neuro.08.026.2009.
33. Callaghan CK, Kelly AM (2012) Differential BDNF signaling in dentate gyrus and perirhinal cortex during consolidation of recognition memory in the rat. *Hippocampus* 22: 2127–2135. doi:10.1002/hipo.22033. PubMed: 22573708.
34. Jansen F, Heiming RS, Lewejohann L, Touma C, Palme R et al. (2009) Modulation of behavioural profile and stress response by 5-HTT genotype and social experience in adulthood. *Behav Brain Res*, 207: 1–9. doi:10.1016/j.bbr.2009.09.033. PubMed: 19782704.
35. Morinobu S, Nibuya M, Duman RS (1995) Chronic antidepressant treatment down-regulates the induction of c-fos mRNA in response to acute stress in rat frontal cortex. *Neuropsychopharmacol* 12: 221–228. doi:10.1016/0893-133X(94)00067-A. PubMed: 7612155.
36. Meneses A (2002) Tianeptine: 5-HT uptake sites and 5-HT 1–7 receptors modulate memory formation in an autoshaping Pavlovian/instrumental task. *Neurosci Biobehav Rev* 26: 309–319. doi:10.1016/S0149-7634(02)00005-2. PubMed: 12034133.
37. Imaki T, Xiao-Quan W, Shibasaki T, Harada S, Chikada N et al. (1995) Chloridazepoxide attenuates stress-induced activation of neurons, corticotropin-releasing factor (CRF) gene transcription and CRF biosynthesis in the paraventricular nucleus (PVN). *Brain Res* 32: 261–270. doi:10.1016/0169-328X(95)00086-8. PubMed: 7500837.
38. Harvey JA (2003) Role of the Serotonin 5-HT2A Receptor in Learning. *Learn Mem* 10: 355–362. doi:10.1101/lm.60803. PubMed: 14557608.
39. Herdegen T, Leah JD (1998) Inducible and constitutive transcription factors in the mammalian nervous system: control of gene expression by Jun, Fos and Krox, and CREB/ATF proteins. *Brain Res Rev* 28: 370–490. doi:10.1016/S0165-0173(98)00018-6.
40. Ogren SO, Eriksson TM, Elvander-Tottie E, D'Addario C, Ekström JC et al. (2008) The role of 5-HT1A receptors in learning and memory. *Behav Brain Res* 195: 54–77. doi:10.1016/j.bbr.2008.02.023. PubMed: 18394726.
41. VanElzakker M, Fevurly RD, Breindel T, Spencer RL (2008) Environmental novelty is associated with a selective increase in Fos expression in the output elements of the hippocampal formation and the perirhinal cortex. *Learn Mem* 15: 899–908. doi:10.1101/lm.1196508. PubMed: 19050162.
42. Williams SR, Wozny C, Mitchell SJ (2007) The back and forth of dendritic plasticity. *Neuron* 56: 947–953. doi:10.1016/j.neuron.2007.12.004. PubMed: 18093518.
43. Lyford GL, Yamagata K, Kaufmann WE, Barnes CA, Sanders LK et al. (1995) Arc, a growth factor and activity-regulated gene, encodes a novel cytoskeleton-associated protein that is enriched in neuronal dendrites. *Neuron* 14: 433–445. doi:10.1016/0896-6273(95)90299-6. PubMed: 7857651.
44. Madsen K, Erritzoe D, Mortensen EL, Gade A, Madsen J et al. (2010) Cognitive function is related to fronto-striatal serotonin transporter levels – a brain PET study in young healthy subjects. *Psychopharmacology* 213: 573–581. doi:10.1007/s00213-010-1926-4. PubMed: 20623110.
45. Steward O, Wallace CS, Lyford GL, Worley PF (1998) Synaptic activation causes the mRNA for the IEG Arc to localize selectively near activated postsynaptic sites on dendrites. *Neuron* 21: 741–751. doi:10.1016/S0896-6273(00)80591-7. PubMed: 9808461.
46. Borg J, Henningsson S, Saijo T, Inoue M, Bah J et al. (2009) Serotonin transporter genotype is associated with cognitive performance but not regional 5-HT1A receptor binding in humans. *Int J Neuropsychopharmacol* 12: 783–792. doi:10.1017/S1461145708009759. PubMed: 19126263.



47. Rodríguez JJ, Davies HA, Silva AT, De Souza IE, Peddie CJ et al. (2005) Long-term potentiation in the rat dentate gyrus is associated with enhanced Arc/Arg3.1 protein expression in spines, dendrites and glia. *Eur J Neurosci* 21: 2384–2396. doi:10.1111/j.1460-9568.2005.04068.x. PubMed: 15932597.
48. Roiser JP, Müller U, Clark L, Sahakian BJ (2007) The effects of acute tryptophan depletion and serotonin transporter polymorphism on emotional processing in memory and attention. *Int J Neuropsychopharmacol* 10: 449–461. doi:10.1017/S146114570600705X. PubMed: 16893493.
49. Strobel A, Dreisbach G, Müller J, Goschke T, Brocke B et al. (2007) Genetic variation of serotonin function and cognitive control. *J Cogn Neurosci* 19: 1923–1931. doi:10.1162/jocn.2007.19.12.1923. PubMed: 17892388.
50. Roiser JP, Rogers RD, Cook LJ, Sahakian BJ (2006) The effect of polymorphism at the serotonin transporter gene on decision-making, memory and executive function in ecstasy users and controls. *Psychopharmacology* 188: 213–227. doi:10.1007/s00213-006-0495-z. PubMed: 16941121.
51. Link W, Konietzko U, Kauselmann G, Krug M, Schwanke B et al. (1995) Somatodendritic expression of an immediate early gene is regulated by synaptic activity. *Proc Natl Acad Sci U\_S\_A* 92: 5734–5738. doi:10.1073/pnas.92.12.5734. PubMed: 7777577.
52. Rao VR, Pintchovski SA, Chin J, Peebles CL, Mitra S et al. (2006) AMPA receptors regulate transcription of the plasticity-related immediate-early gene Arc. *Nat Neurosci* 9: 887–895. doi:10.1038/nn1708. PubMed: 16732277.
53. Guzowski JF, Lyford GL, Stevenson GD, Houston FP, McLaugh JL et al. (2000) Inhibition of activity-dependent arc protein expression in the rat hippocampus impairs the maintenance of long-term potentiation and the consolidation of long-term memory. *J Neurosci* 20: 3993–4001. PubMed: 10818134.
54. Brigman JL, Mathur P, Harvey-White J, Izquierdo A, Saksida LM et al. (2010) Pharmacological or genetic inactivation of the serotonin transporter improves reversal learning in mice. *Cereb Cortex* 20: 1955–1963. doi:10.1093/cercor/bhp266. PubMed: 20032063.
55. Plath N, Ohana O, Dammermann B, Errington ML, Schmitz D et al. (2006) Arc/Arg3.1 is essential for the consolidation of synaptic plasticity and memories. *Neuron* 52: 437–444. doi:10.1016/j.neuron.2006.08.024. PubMed: 17088210.
56. Jedema HP, Gianaros PJ, Greer PJ, Kerr DD, Liu S et al. (2010) Cognitive impact of genetic variation of the serotonin transporter in primates is associated with differences in brain morphology rather than serotonin neurotransmission. *Mol Psychiatry* 15: 512–22–446. doi:10.1038/mp.2009.90. PubMed: 19721434.
57. Messaoudi E, Kanhema T, Soulé J, Tiron A, Dagey G et al. (2007) Sustained Arc/Arg3.1 Synthesis Controls Long-Term Potentiation Consolidation through Regulation of Local Actin Polymerization in the Dentate Gyrus In Vivo. *J Neurosci* 27: 10445–10455. doi:10.1523/JNEUROSCI.2883-07.2007. PubMed: 17898216.
58. Homberg JR, Pattij T, Janssen MCW, Ronken E, De Boer SF et al. (2007) Serotonin transporter deficiency in rats improves inhibitory control but not behavioural flexibility. *Eur J Neurosci* 26: 2066–2073. doi:10.1111/j.1460-9568.2007.05839.x. PubMed: 17897403.
59. Pei Q, Zetterström TSC, Sprakes M, Tordera R, Sharp T (2003) Antidepressant drug treatment induces Arc gene expression in the rat brain. *Neuroscience* 121: 975–982. doi:10.1016/S0306-4522(03)00504-9. PubMed: 14580947.
60. Xie L, Korkmaz KS, Braun K, Bock J (2013) Early life stress-induced histone acetylations correlate with activation of the synaptic plasticity genes Arc and Egr1 in the mouse hippocampus. *J Neurochem* 125: 457–464. doi:10.1111/jnc.12210. PubMed: 23413876.
61. Ravinder S, Burghardt NS, Brodsky R, Bauer EP, Chattarji S (2013) A role for the extended amygdala in the fear-enhancing effects of acute selective serotonin reuptake inhibitor treatment. *Transl Psychiatry* 3: e209. doi:10.1038/tp.2012.137. PubMed: 23321806.
62. Squire LR (1992) Memory and the hippocampus: a synthesis from findings with rats, monkeys, and humans. *Psychol Rev* 99: 195–231. doi:10.1037/0033-295X.99.2.195. PubMed: 1594723.
63. Squire LR (1993) The hippocampus and spatial memory. *Trends Neurosci* 16: 56–57. doi:10.1016/0166-2236(93)90016-F. PubMed: 7680500.
64. Broadbent NJ, Squire LR, Clark RE (2004) Spatial memory, recognition memory, and the hippocampus. *Proc Natl Acad Sci U\_S\_A* 101: 14515–14520. doi:10.1073/pnas.0406344101. PubMed: 15452348.
65. Senba E, Ueyama T (1997) Stress-induced expression of immediate early genes in the brain and peripheral organs of the rat. *Neurosci Res* 29: 183–207. doi:10.1016/S0168-0102(97)00095-3. PubMed: 9436645.
66. Altman J (1962) Are New Neurons Formed in Brains of Adult Mammals. *Science* 135: 1127–1128. doi:10.1126/science.135.3509.1127. PubMed: 13860748.
67. Altman J, Bayer SA (1990) Migration and Distribution of 2 Populations of Hippocampal Granule Cell Precursors during the Perinatal and Postnatal Periods. *J Comp Neurol* 301: 365–381. doi:10.1002/cne.903010304. PubMed: 2262596.
68. Altman J, Das GD (1965) Post-natal origin of microneurons in the rat brain. *Nature* 207: 953–956. doi:10.1038/207953a0. PubMed: 5886931.
69. Gould E, Vail N, Wagers M, Gross CG (2001) Adult-generated hippocampal and neocortical neurons in macaques have a transient existence. *Proc Natl Acad Sci U\_S\_A* 98: 10910–10917. doi:10.1073/pnas.181354698. PubMed: 11526209.
70. Gould E, Tanapat P (1999) Stress and hippocampal neurogenesis. *Biol Psychiatry* 46: 1472–1479. doi:10.1016/S0006-3223(99)00247-4. PubMed: 10599477.
71. Heine VM, Maslam S, Zareno J, Joëls M, Lucassen PJ (2004) Suppressed proliferation and apoptotic changes in the rat dentate gyrus after acute and chronic stress are reversible. *Eur J Neurosci* 19: 131–144. doi:10.1046/j.1460-9568.2003.03100.x. PubMed: 14750971.
72. Lee MM, Reif A, Schmitt AG (2013) Major depression: a role for hippocampal neurogenesis? *Curr Top. Behav Neurosci* 14: 153–179. doi:10.1007/7854\_2012\_226.
73. Gould E (1999) Serotonin and Hippocampal Neurogenesis. *Neuropsychopharmacol* 21: 46S–51S. doi:10.1016/S0893-133X(99)00045-7. PubMed: 10432488.
74. Gould E, Beylin A, Tanapat P, Reeves AJ, Shors TJ (1999) Learning enhances adult neurogenesis in the hippocampal formation. *Nat Neurosci* 2: 260–265. doi:10.1038/6365. PubMed: 10195219.
75. Dupret D, Fabre A, Döbrössy MD, Panatier A, Rodríguez JJ et al. (2007) Spatial learning depends on both the addition and removal of new hippocampal neurons. *PLOS Biol* 5: e214. doi:10.1371/journal.pbio.0050214. PubMed: 17683201.
76. Harrison FE, Hosseini AH, McDonald MP (2009) Endogenous anxiety and stress responses in water maze and Barnes maze spatial memory tasks. *Behav Brain Res* 198: 247–251. doi:10.1016/j.bbr.2008.10.015. PubMed: 18996418.
77. McEwen BS, Sapolsky RM (1995) Stress and cognitive function. *Curr Opin Neurobiol* 5: 205–216. doi:10.1016/0959-4388(95)80028-X. PubMed: 7620309.
78. McEwen BS, Magarinos AM (2001) Stress and hippocampal plasticity: implications for the pathophysiology of affective disorders. *Hum Psychopharmacol* 16: S7–S19. doi:10.1002/hup.266. PubMed: 12404531.
79. de Kloet ER, Oitzl MS, Joëls M (1999) Stress and cognition: are corticosteroids good or bad guys? *Trends Neurosci* 22: 422–426. doi:10.1016/S0166-2236(99)01438-1. PubMed: 10481183.
80. Meneses A (1999) 5-HT system and cognition. *Neurosci Biobehav Rev* 23: 1111–1125. doi:10.1016/S0149-7634(99)00067-6. PubMed: 10643820.
81. Barnes CA (1979) Memory deficits associated with senescence: a neurophysiological and behavioral study in the rat. *J Comp Physiol Psychol* 93: 74–104. doi:10.1037/h0077579. PubMed: 221551.
82. Lewejohann L (2004) Digital image processing in behavioral sciences.
83. Morris R (1984) Developments of a water-maze procedure for studying spatial learning in the rat. *J Neurosci Methods* 11: 47–60. doi:10.1016/0165-0270(84)90007-4. PubMed: 6471907.
84. Franklin K, Paxinos G (1997) *The Mouse Brain in Stereotaxic Coordinates*. San Diego: Academic.
85. Heiming RS, Mönning A, Jansen F, Kloke V, Lesch KP et al. (2013) To attack, or not to attack? The role of serotonin transporter genotype in the display of maternal aggression. *Behav Brain Res* 242: 135–141. doi:10.1016/j.bbr.2012.12.045. PubMed: 23291155.
86. Holmes A, Yang RJ, Murphy DL, Crawley JN (2002) Evaluation of antidepressant-related behavioral responses in mice lacking the serotonin transporter. *Neuropsychopharmacol* 27: 914–923. doi:10.1016/S0893-133X(02)00374-3. PubMed: 12464448.
87. Kalueff AV, Gallagher PS, Murphy DL (2006) Are serotonin transporter knockout mice depressed?: hypoactivity but no anhedonia. *Neuroreport* 17: 1347–1351. Retrieved unpublished at whilst December year 1111 from . doi:10.1097/01.wnr.0000230514.08962.76.
88. Kalueff AV, Fox MA, Gallagher PS, Murphy DL (2007) Hypolocomotion, anxiety and serotonin syndrome-like behavior contribute to the complex phenotype of serotonin transporter knockout mice. *Genes Brain Behav* 6: 389–400. doi:10.1111/j.1601-183X.2006.00270.x. PubMed: 16939636.
89. Üçeyler N, Schütt M, Palm F, Vogel C, Meier M et al. (2010) Lack of the serotonin transporter in mice reduces locomotor activity and leads to

- gender-dependent late onset obesity. *Int J Obes Relat Metab Disord* 34: 701–711. doi:10.1038/ijo.2009.289. PubMed: 20084070.
90. Porsolt RD (1979) Animal model of depression. *Biomedicine* 30: 139–140. PubMed: 573643.
  91. Carroll JC, Boyce-Rustay JM, Millstein R, Yang R, Wiedholz LM et al. (2007) Effects of mild early life stress on abnormal emotion-related behaviors in 5-HTT knockout mice. *Behav Genet* 37: 214–222. doi:10.1007/s10519-006-9129-9. PubMed: 17177116.
  92. Streijger F, Pluk H, Oerlemans F, Beckers G, Bianco AC et al. (2009) Mice lacking brain-type creatine kinase activity show defective thermoregulation. *Physiol Behav* 97: 76–86. doi:10.1016/j.physbeh.2009.02.003. PubMed: 19419668.
  93. Iivonen H, Nurminen L, Harri M, Tanila H, Puolivälä J (2003) Hypothermia in mice tested in Morris water maze. *Behav Brain Res* 141: 207–213. doi:10.1016/S0166-4328(02)00369-8. PubMed: 12742257.
  94. Hölscher C (1999) Stress impairs performance in spatial water maze learning tasks. *Behav Brain Res* 100: 225–235. doi:10.1016/S0166-4328(98)00134-X. PubMed: 10212070.
  95. Li Q, Wichems C, Heils A, Van de Kar LD, Lesch KP et al. (1999) Reduction of 5-hydroxytryptamine (5-HT) 1A-mediated temperature and neuroendocrine responses and 5-HT1A binding sites in 5-HT transporter knockout mice. *J Pharmacol Exp Ther* 291: 999–1007. PubMed: 10565817.
  96. Jiang X, Wang J, Luo T, Li Q (2009) Impaired hypothalamic-pituitary-adrenal axis and its feedback regulation in serotonin transporter knockout mice. *Psychoneuroendocrinology* 34: 317–331. doi:10.1016/j.psyneuen.2008.09.011. PubMed: 18980809.
  97. Armando I, Tjurmina OA, Li Q, Murphy DL, Saavedra JM (2003) The Serotonin Transporter is Required for Stress-Evoked Increases in Adrenal Catecholamine Synthesis and Angiotensin II AT<sub>2</sub> Receptor Expression. *Neuroendocrinology* 78: 217–225. doi:10.1159/000073705. PubMed: 14583654.
  98. Tjurmina OA (2002) Exaggerated Adrenomedullary Response to Immobilization in Mice with Targeted Disruption of the Serotonin Transporter Gene. *Endocrinology* 143: 4520–4526. doi:10.1210/en.2002-220416. PubMed: 12446578.
  99. Tjurmina OA, Armando I, Saavedra JM, Li Q, Murphy DL (2004) Life-long serotonin reuptake deficiency results in complex alterations in adrenomedullary responses to stress. *Ann N Y Acad Sci* 1018: 99–104. doi:10.1196/annals.1296.011. PubMed: 15240357.
  100. Bartolomucci A, Carola V, Pascucci T, Puglisi-Allegra S, Cabib S et al. (2010) Increased vulnerability to psychosocial stress in heterozygous serotonin transporter knockout mice. *Dis Model J Mech* 3: 459–470. doi:10.1242/dmm.004614.
  101. Hariri AR, Mattay VS, Tessitore A, Kolachana B, Fera F et al. (2002) Serotonin transporter genetic variation and the response of the human amygdala. *Science* 297: 400–403. doi:10.1126/science.1071829. PubMed: 12130784.
  102. Rhodes RA, Murthy NV, Dresner MA, Selvaraj S, Stavrakakis N et al. (2007) Human 5-HT transporter availability predicts amygdala reactivity in vivo. *J Neurosci* 27: 9233–9237. doi:10.1523/JNEUROSCI.1175-07.2007. PubMed: 17715358.
  103. Caspi A, Sugden K, Moffitt TE, Taylor A, Craig IW et al. (2003) Influence of life stress on depression: Moderation by a polymorphism in the 5-HTT gene. *Science* 301: 386–389. doi:10.1126/science.1083968. PubMed: 12869766.
  104. Zalsman G, Huang Y-Y, Oquendo MA, Burke AK, Hu X-Z et al. (2006) Association of a triallelic serotonin transporter gene promoter region (5-HTTLPR) polymorphism with stressful life events and severity of depression. *Am J Psychiatry* 163: 1588–1593. doi:10.1176/appi.ajp.163.9.1588. PubMed: 16946185.
  105. Guzowski JF, Setlow B, Wagner EK, McGaugh JL (2001) Experience-dependent gene expression in the rat hippocampus after spatial learning: a comparison of the immediate-early genes Arc, c-fos, and zif268. *J Neurosci* 21: 5089–5098. PubMed: 11438584.
  106. Bertaina-Anglade V, Tramu G, Destrade C (2000) Differential learning-stage dependent patterns of c-Fos protein expression in brain regions during the acquisition and memory consolidation of an operant task in mice. *Eur J Neurosci* 12: 3803–3812. doi:10.1046/j.1460-9568.2000.00258.x. PubMed: 11029651.
  107. Wallace CS, Lyford GL, Worley PF, Steward O (1998) Differential intracellular sorting of immediate early gene mRNAs depends on signals in the mRNA sequence. *J Neurosci* 18: 26–35. PubMed: 9412483.
  108. Molteni R, Calabrese F, Maj PF, Olivier JDA, Racagni G et al. (2009) Altered expression and modulation of activity-regulated cytoskeletal associated protein (Arc) in serotonin transporter knockout rats. *Eur Neuropsychopharmacol* 19: 898–904. doi:10.1016/j.euroneuro.2009.06.008. PubMed: 19576731.
  109. Eriksson TM, Delagrangre P, Spedding M, Popoli M, Mathé AA et al. (2012) Emotional memory impairments in a genetic rat model of depression: involvement of 5-HT/MEK/Arc signaling in restoration. *Mol Psychiatry* 17: 173–184. doi:10.1038/mp.2010.131. PubMed: 21242991.
  110. Lesch KP, Waider J (2012) Serotonin in the Modulation of Neural Plasticity and Networks: Implications for Neurodevelopmental Disorders. *Neuron* 76: 175–191. doi:10.1016/j.neuron.2012.09.013. PubMed: 23040814.
  111. Chowdhury S, Shepherd JD, Okuno H, Lyford G, Petralia RS et al. (2006) Arc/Arg3.1 interacts with the endocytic machinery to regulate AMPA receptor trafficking. *Neuron* 52: 445–459. doi:10.1016/j.neuron.2006.08.033. PubMed: 17088211.
  112. Senba E, Umemoto S, Kawai Y, Noguchi K (1994) Differential expression of fos family and jun family mRNAs in the rat hypothalamo-pituitary-adrenal axis after immobilization stress. *Mol Brain Res* 24: 283–294. doi:10.1016/0169-328X(94)90141-4. PubMed: 7968368.
  113. Matsuda S, Peng H, Yoshimura H, Wen T-C, Fukuda T et al. (1996) Persistent c-fos expression in the brains of mice with chronic social stress. *Neurosci Res* 26: 157–170. doi:10.1016/S0168-0102(96)01088-7. PubMed: 8953578.
  114. Adell A, Garcia-Marquez C, Armario A, Gelpi E (1988) Chronic Stress Increases Serotonin and Noradrenaline in Rat Brain and Sensitizes Their Responses to a Further Acute Stress. *J Neurochem* 50: 1678–1681. doi:10.1111/j.1471-4159.1988.tb02462.x. PubMed: 2453609.
  115. Watanabe Y, Gould E, Cameron HA, Daniels DC, McEwen BS (1992) Phenytoin prevents stress- and corticosterone-induced atrophy of CA3 pyramidal neurons. *Hippocampus* 2: 431–435. doi:10.1002/hipo.450020410. PubMed: 1308199.
  116. Watanabe Y, Gould E, McEwen BS (1992) Stress induces atrophy of apical dendrites of hippocampal CA3 pyramidal neurons. *Brain Res* 588: 341–345. doi:10.1016/0006-8993(92)91597-8. PubMed: 1393587.
  117. Watanabe Y, Gould E, Daniels DC, Cameron H, McEwen BS (1992) Tianeptine attenuates stress-induced morphological changes in the hippocampus. *Eur J Pharmacol* 222: 157–162. doi:10.1016/0014-2999(92)90830-W. PubMed: 1468492.
  118. Magariños AM, McEwen BS (1995) Stress-induced atrophy of apical dendrites of hippocampal CA3c neurons: comparison of stressors. *Neuroscience* 69: 83–88. doi:10.1016/0306-4522(95)00256-I. PubMed: 8637635.
  119. Magariños AM, McEwen BS (1995) Stress-induced atrophy of apical dendrites of hippocampal CA3c neurons: involvement of glucocorticoid secretion and excitatory amino acid receptors. *Neuroscience* 69: 89–98. doi:10.1016/0306-4522(95)00259-L. PubMed: 8637636.
  120. Sunanda, Rao MS, Raju TR (1995) Effect of chronic restraint stress on dendritic spines and excrescences of hippocampal CA3 pyramidal neurons—a quantitative study. *Brain Res* 694: 312–317. doi:10.1016/0006-8993(95)00822-8. PubMed: 8974660.
  121. Luine V, Villegas M, Martinez C, McEwen BS (1994) Repeated stress causes reversible impairments of spatial memory performance. *Brain Res* 639: 167–170. doi:10.1016/0006-8993(94)91778-7. PubMed: 8180832.
  122. Conrad CD, Galea LA, Kuroda Y, McEwen BS (1996) Chronic stress impairs rat spatial memory on the Y maze, and this effect is blocked by tianeptine pretreatment. *Behav Neurosci* 110: 1321–1334. doi:10.1037/0735-7044.110.6.1321. PubMed: 8986335.
  123. Brezun JM, Daszuta A (2000) Serotonin may stimulate granule cell proliferation in the adult hippocampus, as observed in rats grafted with foetal raphe neurons. *Eur J Neurosci* 12: 391–396. doi:10.1046/j.1460-9568.2000.00932.x. PubMed: 10651896.
  124. Banas M, Soumier A, Hery M, Mocaër E, Daszuta A (2006) Agomelatine, a new antidepressant, induces regional changes in hippocampal neurogenesis. *Biol Psychiatry* 59: 1087–1096. doi:10.1016/j.biopsych.2005.11.025. PubMed: 16499883.
  125. Benninghoff J, Gritti A, Rizzi M, Lamorte G, Schloesser RJ et al. (2010) Serotonin depletion hampers survival and proliferation in neurospheres derived from adult neural stem cells. *Neuropsychopharmacol* 35: 893–903. doi:10.1038/npp.2009.181. PubMed: 20010549.
  126. Schipper P, Kiliaan AJ, Homberg JR (2011) A mixed polyunsaturated fatty acid diet normalizes hippocampal neurogenesis and reduces anxiety in serotonin transporter knockout rats. *Behav Pharmacol* 22: 324–334. doi:10.1097/FBP.0b013e328347881b. PubMed: 21606840.
  127. Ehninger D, Kempermann G (2006) Paradoxical effects of learning the Morris water maze on adult hippocampal neurogenesis in mice may be explained by a combination of stress and physical activity. *Genes Brain Behav* 5: 29–39. doi:10.1111/j.1601-183X.2005.00129.x. PubMed: 16436186.

128. Lucassen PJ, Meerlo P, Naylor AS, van Dam AM, Dayer AG et al. (2010) Regulation of adult neurogenesis by stress, sleep disruption, exercise and inflammation: Implications for depression and antidepressant action. *Eur Neuropsychopharmacol* 20: 1–17. doi: 10.1016/j.euroneuro.2009.08.003. PubMed: 19748235.
129. Námestková K, Simonová Z, Syková E (2005) Decreased proliferation in the adult rat hippocampus after exposure to the Morris water maze and its reversal by fluoxetine. *Behav Brain Res* 163: 26–32. doi: 10.1016/j.bbr.2005.04.013. PubMed: 15941600.
130. Coras R, Siebzehnrubl FA, Pauli E, Huttner HB, Njunting M et al. (2010) Low proliferation and differentiation capacities of adult hippocampal stem cells correlate with memory dysfunction in humans. *Brain* 133: 3359–3372. doi:10.1093/brain/awq215. PubMed: 20719879.
131. Moser MB, Moser EI (1998) Functional differentiation in the hippocampus. *Hippocampus* 8: 608–619. doi:10.1002/(SICI)1098-1063(1998)8:6. PubMed: 9882018&it;608::AID-HIPO3&gt;3.0.CO;2-7
132. Moser EI (1995) Learning-related changes in hippocampal field potentials. *Behav Brain Res* 71: 11–18. doi: 10.1016/0166-4328(95)00051-8. PubMed: 8747171.
133. Davachi L, Wagner AD (2002) Hippocampal contributions to episodic encoding: insights from relational and item-based learning. *J Neurophysiol* 88: 982–990. doi:10.1152/jn00046.2002. PubMed: 12163547.
134. Henke P (1990) Hippocampal Pathway to the Amygdala and Stress-Ulcer Development. *Brain. Res Bull* 25: 691–695. doi: 10.1016/0361-9230(90)90044-Z.
135. Herman JP, Dolgas CM, Carlson SL (1998) Ventral subiculum regulates hypothalamo-pituitary-adrenocortical and behavioural responses to cognitive stressors. *Neuroscience* 86: 449–459. doi: 10.1016/S0306-4522(98)00055-4. PubMed: 9881860.
136. Fanselow MS, Dong H-W (2010) Are the Dorsal and Ventral Hippocampus Functionally Distinct Structures? *Neuron* 65: 7–19. doi: 10.1016/j.neuron.2009.11.031. PubMed: 20152109.
137. Segal M, Richter-Levin G, Maggio N (2010) Stress-induced dynamic routing of hippocampal connectivity: A hypothesis. *Hippocampus* 20: 1332–1338. doi:10.1002/hipo.20751. PubMed: 20082290.
138. Vertes RP, Fortin WJ, Crane AM (1999) Projections of the median raphe nucleus in the rat. *J Comp Neurol* 407: 555–582. doi:10.1002/(SICI)1096-9861(19990517)407:4<555::AID-CNE7>3.0.CO;2-E. PubMed: 10235645.
139. Lawston J, Borella A, Robinson JK, Whitaker-Azmitia PM (2000) Changes in hippocampal morphology following chronic treatment with the synthetic cannabinoid WIN 55. *Brain Res* 877: 407–410. pp. 212-212. Retrieved unpublished at whilst December year 1111 from . doi:10.1016/S0006-8993(00)02739-6.
140. Choi Y-S, Lee M-Y, Sung K-W, Jeong S-W, Choi J-S et al. (2003) Regional differences in enhanced neurogenesis in the dentate gyrus of adult rats after transient forebrain ischemia. *Mol Cells* 16: 232–238. PubMed: 14651266.
141. Choi Y-S, Cho K-O, Kim SY (2007) Asymmetry in enhanced neurogenesis in the rostral dentate gyrus following kainic acid-induced status epilepticus in adult rats. *Arch Pharm Res* 30: 646–652. doi: 10.1007/BF02977661. PubMed: 17615686.
142. Chawla MK, Guzowski JF, Ramirez-Amaya V, Lipa P, Hoffman KL et al. (2005) Sparse, environmentally selective expression of Arc RNA in the upper blade of the rodent fascia dentata by brief spatial experience. *Hippocampus* 15: 579–586. doi:10.1002/hipo.20091. PubMed: 15920719.
143. Leuner B, Gould E (2010) Structural Plasticity and Hippocampal Function. *Annu Rev Psychol* 61: 111–140. doi:10.1146/annurev.psych.093008.100359. PubMed: 19575621.