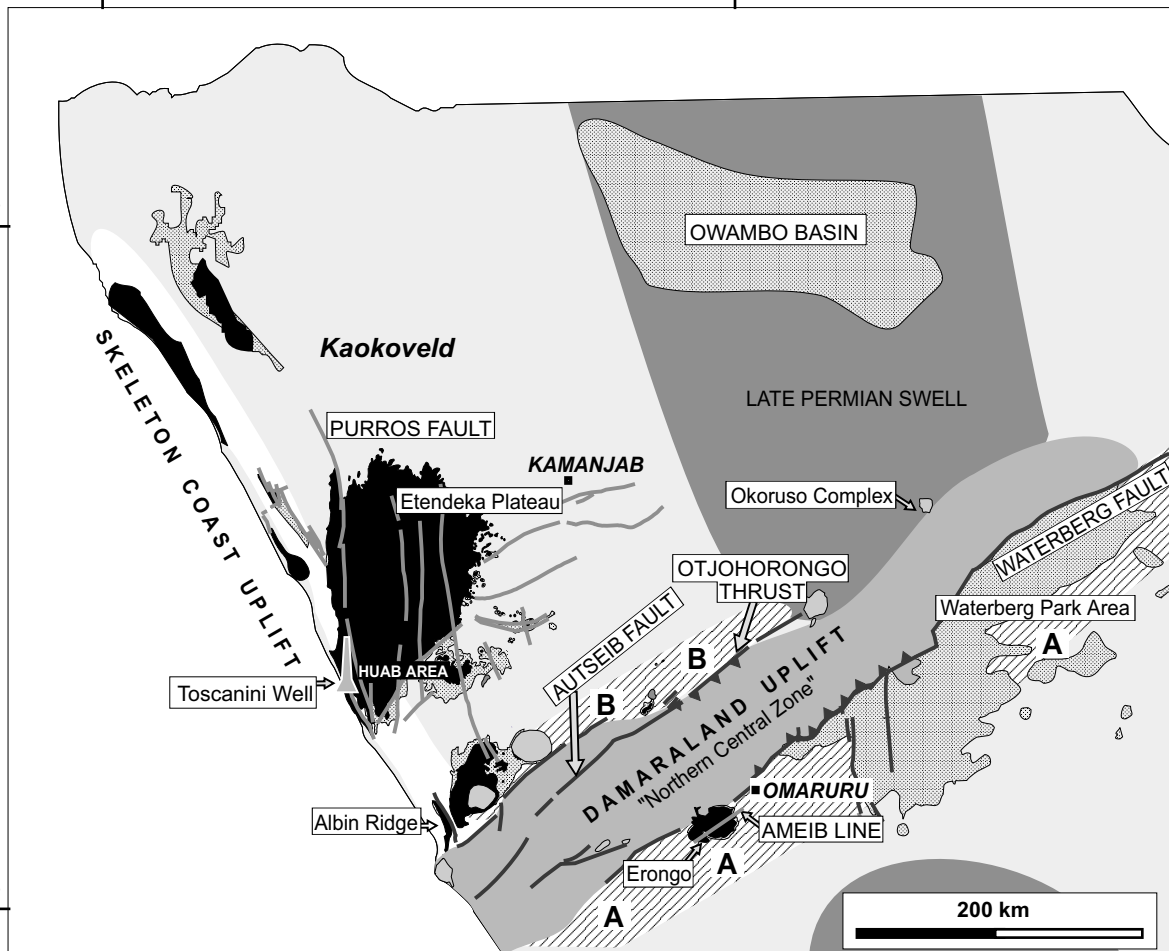


12°E

16°E

18°S

22°S



- Etendeka Group Volcanics
- Karoo and Etendeka Group Sedimentary Rocks
- Post-Karoo Intrusive Complexes
- Fault
- Thrust

- Skeleton Coast Uplift
- Late Permian-Triassic Swell
- A Waterberg-Erongo Basin
- B Goboboseb-Otjongundu Basin

200 km