

Section N10 (Mixed Unit)
 S20°45'03"E14°06'46"

TWYFELFONTEIN FORMATION

GAI-AS

Main Unit

Mixed Unit

Krone

Transverse dunes

2nd drying upward cycle

Braided stream and aeolian deposits

1st drying upward cycle

Braided stream and aeolian deposits

Braided stream and aeolian deposits

Braided stream deposits

Hemi-pelagic lacustrine deposits

5 m



sss

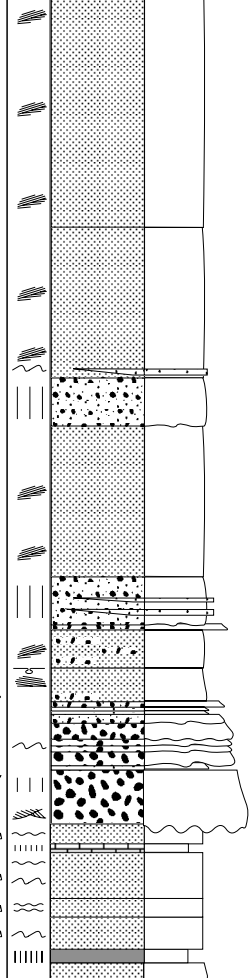
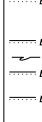
☉

☉

☉

sss

☉



10 8 6 4 2 0 -2 -4 -6
 Mud
 Sand
 Gravel