

Geological map on sheet 1713BD Swartbooisdrif

S 17°20.000' - S 17°21.550'
E 13°46.000' - E 13°48.000'

mapped by: Dipl. Min. Kirsten Drüppel
Mineralogical Institute, University of Würzburg, 2003

Legend

- Tertiary to Quaternary**
- All River floor deposits (alluvium, soil cover, scree)
 - Cgl Fluvial terrace deposits (carbonate cemented conglomerates)
 - Qtz.p Fluvial terrace deposits (unconsolidated quartzite pebbles)

- Age unknown**
- Dol Dolerite
 - Tr Trachyte (carbonate-rich)
 - An Andesite

Swartbooisdrif carbonatites

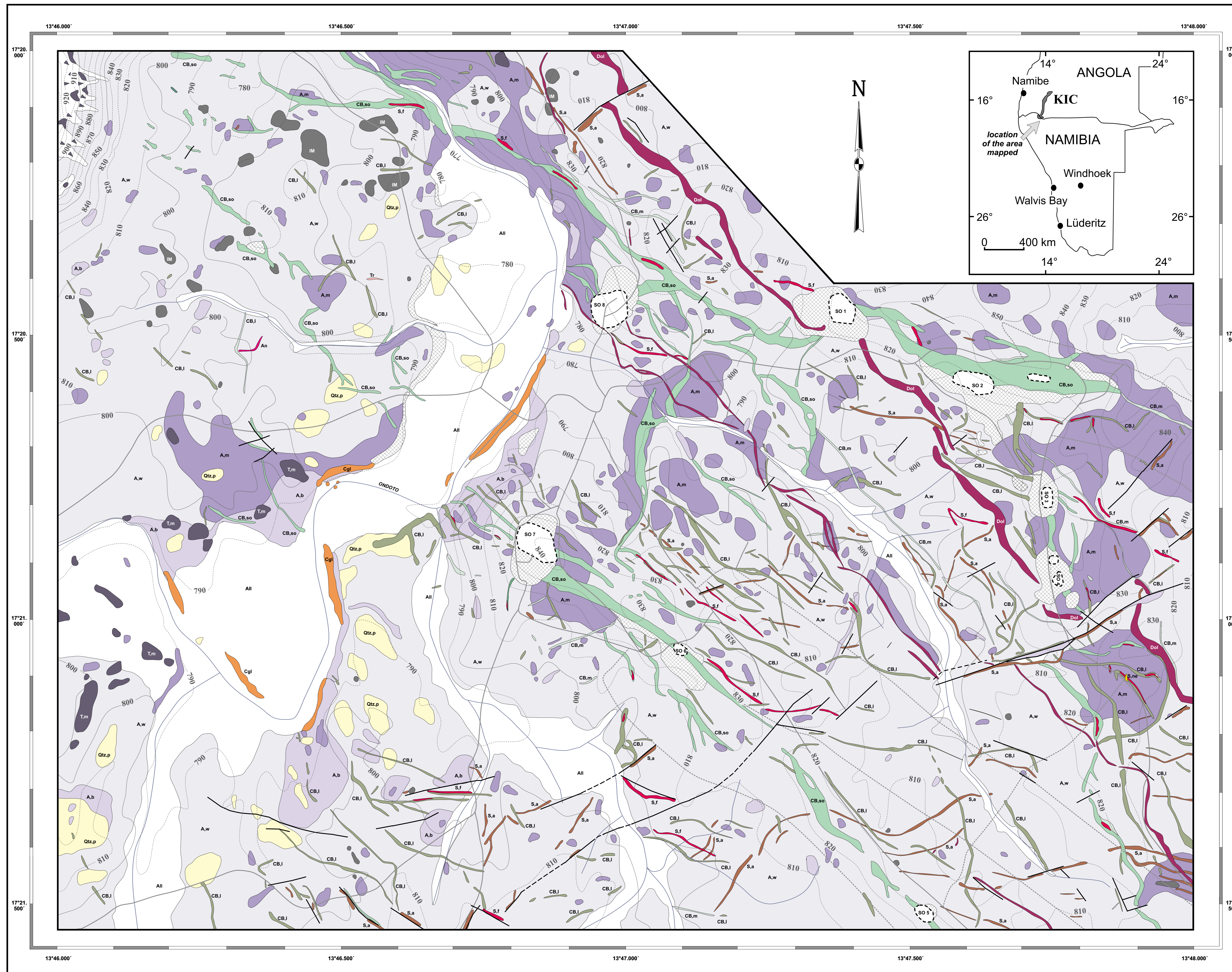
- Proterozoic (1,140-1,120 Ma)**
- CB.so Carbonatitic breccia (sodalite-rich)
 - CB.m Carbonatitic breccia (massive)
 - CB.l Carbonatitic breccia (layered)

Swartbooisdrif syenites

- Proterozoic (1,380-1,340 Ma)**
- S.ne Nepheline syenite
 - S.f Fenitized syenite
 - S.a Syenite and quartz-syenite (altered)

Kunene Intrusive Complex

- Proterozoic (1,365-1,347 Ma)**
- IM Ilmenite-magnetite ore
 - A.b Anorthosite (brecciated)
 - T.m Leucotroctolite (massive)
 - A.m Leucogabbronorite and anorthosite (massive)
 - A.w White anorthosite (pervasively altered)



- so Sodalite opencast
- Mining waste pile
- Talus deposits

- Geological border
- Fault
 - a) mapped
 - b) postulated
- Ephemeral river
- Subsidiary road
- Open strip for trial drillings

Topographic map:
South West Africa
1: 50,000 Sheet
1713BD Swartbooisdrif
First Edition

Published by
the Surveyor-General,
Windhoek, 1980

Scale 1 : 5,000

0 200 400 m